



JOHNSONS
OF WHITLEY
PROFESSIONAL NURSERYMEN

100
YEARS & STILL
growing
1921 - 2021



TAKING A GROWING LEAD

COMPANY PROFILE

WELCOME TO JOHNSONS OF WHIXLEY. A LEADING COMMERCIAL NURSERY, GROWER, AND WHOLESALE SUPPLY EXPERT.

AS AN ACCOMPLISHED NATIONWIDE GROWER AND LEADING SUPPLIER OF PLANTS, SHRUBS AND TREES, BASED IN NORTH YORKSHIRE, WE OFFER A VAST PORTFOLIO OF STOCK TO SUIT ALL YOUR HORTICULTURAL NEEDS.



CONTENTS



PROFESSIONAL
NURSERYMEN



WHOLESALE
COMMERCIAL



GARDEN
CENTRE SALES



WHOLESALE
XPRESS

About Us	04	Natural World	22	Quixley Gin, Wine & Ales	32
Who We Are	04	Environment	23		
Company Timeline	06	Bees, Ponds, Wildlife & Sustainability	23	Plant Guide	34
Our Family Business	08	Net Contributors to the Environment	24	Shrubs Top 100	34
Our Locations	09	BSI ISO Standards	24	Plant Pot Sizing Guide	37
How to Order	09	Our Safeguarding Measures	25	Trees Top 50	38
Our Services To You	10	Technology	26	Tree Sizing Guide	41
Nationwide Delivery	11	Automation, SAP - MRP System, Drone, Workflow & Ivende	27	Herbaceous Top 100	42
Our Sectors	12	Our People	28	Our Gardening Reminders...	45
Wholesale Commercial	13	What Our Staff Say...	29	Hedging Top 30	46
Garden Centre Sales	14	Careers at Johnsons	30	A Guide to Bare Root & Root Ball Hedging	49
Wholesale Xpress (Cash & Carry)	15	Working with Charities	31	Contact Us	51
Case Studies	16				
Wholesale Commercial	16				
Garden Centre Sales	19				
Wholesale Xpress (Cash & Carry)	20				

A vibrant field of flowers in various shades of pink, purple, and red, growing in a nursery setting. The flowers are on tall green stems, and the background shows a clear blue sky with light clouds. In the distance, there are white structures that appear to be part of a greenhouse or nursery facility.

ABOUT US...

THREE GENERATIONS OF HORTICULTURAL BUSINESS EXPERIENCE

**A 'GROWING' FAMILY-
OWNED BUSINESS SPANNING
THREE GENERATIONS**

We are a three-generation family business located in North Yorkshire, equidistant between York and Harrogate, with 100 years' experience in growing and supplying trees, shrubs and plants to UK-wide planting schemes.

We supply in excess of seven million plants and trees annually across our three channels to market. The business operates from our headquarters in Whixley, where all our operations, administration and management functions converge.



WHOLESALE COMMERCIAL

Enhancing commercial landscapes with quality plants and trees for 100 years with a unique offering, including the option of contract growing.



GARDEN CENTRE SALES

One of the nation's leading garden centre and retail suppliers for over 40 years, our heritage as a high-quality wholesale nursery grower helps us understand what consumers want and ensures that their exacting standards are consistently met.



WHOLESALE XPRESS (CASH & CARRY)

A one-stop trade shop for horticultural professionals including landscape gardeners, landscape contractors, garden designers, hotels, estates, caravan parks, schools and universities, builders, property developers and many more.

To find out more about our sectors, continue to pages 12 - 15.

COMPANY TIMELINE

Our business is steeped in history. Originally founded in 1921, Johnsons has been run by three generations of the Richardson family since 1964.

1921

'ER Johnson (Nurseries Ltd)' was founded by WW1 veteran Eric Johnson.



1971

The business dropped retail sales and became totally wholesale.



1978

Purchased 18 acres at Farnham to increase field rose production.

1983

Purchased 21 acres at Dunsforth.

1989

Purchased 29 hectares at Ryther near Cawood, adjacent to the airfield. Sales reached the £2m mark.



1992

Johnsons became the first European horticultural business of any kind to achieve BS 5750 (ISO 9000), in 1992, which led to relationships with organisations such as Sainsbury's and many senior architectural practices throughout the country.



1994

Johnsons purchased an additional 18 acres at Cattal Station to expand its container production economically.

1997

Total annual sales passed £4m.

2003

Established the cash and carry unit at Chobham in Surrey to take advantage of the higher prices achievable in the south.

Total annual sales passed £9m.



1972

Purchased the 50-acre Newlands Nursery.



1964

Horticultural Advisor John Richardson took over the company (7½ acres, £33,000 turnover, 10 staff).



1981

Survived the hard frosts earlier in the year and invested in the first fork lift truck, the first of nine!

1982

Andrew Richardson joined the company.



1985

Sales hit £1m for the first time.

1984

Graham Richardson joined the company.



1993

The company became known as Johnsons of Whitley Ltd.

1990

Johnsons acquired Endfield Nursery at Wilberfoss providing the business with a substantial source of transplants and a new market selling forest trees to estates and forestry planting contractors.

Purchased Triangle Nurseries providing an additional 2.5 acres and an area of glass.

John Richardson awarded Pearson Memorial Medal for Services to Horticulture.

1996

The new container area was fully cropped, bringing the area of containers to 17 hectares.

A new, state-of-the-art, 2000sq.m propagation unit was built complete with overhead gantry transportation.



Iain Richardson joined the company.



1999

Johnsons crashed through the first £1 million sales month with a sales increase of 40% on the previous year.

Sales went through the £6m barrier.



2006

Luke Richardson joined the company. £10m annual sales total achieved.

2008

'Yorkshire Tourism' identified the Thornville nursery as being the very centre of Yorkshire.

The family celebrated 50 years in business in 2014.

Purchased new high volume potting machine at Newlands.

Achieved registration to ISO 14001.



2012

Redundant Endfield site sold. Bark Topping machine and automated watering installed in Newlands potting line.

Ellie Richardson joined the company.

2014

Turnover £9.7 million 87 staff.

New biomass boiler installed at Whixley, heating four houses and a large glasshouse.

Two new low emission trucks purchased, plus one high volume artic.

Shaun Richardson joins the company.



2016

Turnover £10.5million 90 staff.

Two additional low emission trucks and trailers purchased.

Provided 4 members to RHS project on school environmental projects.

Provided plants free of charge for the post flooding reclamation project at Glen Rhydding, Lake District.

Luke Richardson makes pro landscapers 30 under 30.

Best family-run business of the Year at Harrogate Advertiser Business awards 2016.

Total sales since starting in 1964 exceed £200million, with an estimate of 220 million plants sold.



2018

Our onsite apiary houses more than 400,000 bees for the first time.

Luke takes over as Cash & Carry Manager.

New 12K investment in lvenid system for cash & carry office.

Johnsons placed at number 34 of York's top 100 businesses.

Company's own gin is launched 'Quixley Gin'.

2021

Johnsons celebrate their 100th year in business, staff are given an additional days holiday and a party is organised.

Crowned as the regions 20th top business.

Crowned runner-up for the Yorkshire region at the prestigious Family Business of the Year Awards.

Sales exceeding £15m for the first time.

2005

John Richardson honoured with an Individual Excellence Award and Lifetime Achievement Award by the HTA and Horticulture Week.



2007

Andrew Richardson elected as President of the Horticultural Trades Association and awarded the prestigious Pearson Memorial Medal by the HTA - an honour he shares with his father John.

2011

9500sq.m of additional tunnels built on Cattal nursery.

Chobham Plant Centre site closed, impact of the recession at its height.



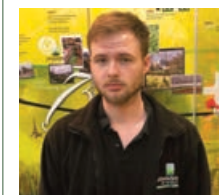
2013

£8.8m turnover 94 staff.

Borehole drilled at Whixley to eradicate use of mains water.

Achieved silver Health & Safety award from ROSPA at first attempt.

Rob Richardson joins the company.



2015

High efficiency lighting installed throughout the business.

Paul Richardson joins the company.



2017

Johnsons experiences its most profitable year to date.

Turnover £12.1 million 98 staff.

Voted runner-up in Yorkshire's best small family business competition.

Provided all plants free of charge for BBC charity garden (DIY SOS) in Swansea.

John receives lifetime achievement award from the Yorkshire Post.

Johnsons first apiary producing first batch of honey.

Johns 80th Birthday - celebrated by staff, family and friends and is honoured with a life-sized sculpture.



2019

Robert Richardson appointed as Production Manager.

Ellie Richardson takes on first marketing role within the company.

Wholesale Xpress celebrates its best trading year ever with 32% rise in revenue.

2020

The business faces challenges like no other due to the Covid-19 pandemic and Brexit.

Iain's second son Jonathan Richardson joins the business.

13.2 million turnover.



An additional 2300 sqm of covered area added to our Roecliffe site, this will hold an additional 120,000 plants per year.

An additional 3200 sqm of new beds added to our Newlands site that will hold up to 180,000 extra 2L plants per year.

Record turnover for company, £14.3 million.

Onsite apiary rises to 800,000 bees.



OUR FAMILY BUSINESS



Andrew Richardson
(Joint Managing Director)

Business Strategy,
Vehicle Fleet Management
and Compliance, Group Insurance.



Iain Richardson
(Joint Managing Director)

Business Strategy, Production, Amenity & Retail
Sales Divisions, Operations and Supply Chain,
Key Account Management, Facilities.



Robert Richardson
(Production Manager)

Responsible for Delivery of a Production Plan
and all Associated Resource (x5 Production
Nurseries) and all Production Personnel.



Ellie Richardson
(Marketing Manager)

All PR and Marketing Activity, Social Media
and E-marketing, Web Site Development,
Charitable and Social Presence.



Tracey Richardson
(Front of House
& Reception)

Manages Hospitality
and Front of House,
General Admin Assistance.



Shaun Richardson
(Plant Centre General
& Lifting Supervisor)

Collates Customer Orders,
Ensures Tactical Re-stocking.



John Richardson
(Chairman)

Business Strategy,
ISO Quality & Enviro Systems,
Chair of H&S Exec Group.



Graham Richardson
(Group Managing Director)

Business Strategy, Finance, Systems,
HR & People, Marketing Strategy,
Wholesale Plant Centre Strategy.



Luke Richardson
(Director of Sales)

Amenity Sales, Plant Centre Sales,
Sales Development and Strategy.
Member of Business Steering SMG (Senior
Management Group).



Paul Richardson
(Purchase Ledger
& General Accounts)

Reports to Financial Controller.
Manages Supplier Accounts
and Payments.



Jonathan Richardson
(Plant Centre Assistant)

General Nursery Work, Collation of
Customer Orders and Restocking
of the Cash & Carry Unit.

OUR LOCATIONS

Johnsons of Whixley are based in the heart of Yorkshire, a few minutes from the A1, we are well placed to service any project of any scale throughout the UK.

NEWLANDS & TRIANGLE NURSERIES

Are located just off junction 47 on the A1, equidistant between Harrogate and York they are home to our head office, cash & carry trade plant centre, collections & deliveries, the dispatch yard and provide space for 1000s of hardy container plants in 2L, 3L and 5L pots.

WHIXLEY

Is our dedicated herbaceous and young plant production facility which is largely under cover for optimum growth and winter protection.

CATTAL CONTAINER UNIT

Specialises in the production of high impact specimen plants primarily 5L and 10L pots. 50% of this 18-acre site is undercover providing additional cold weather protection.

THORNVILLE

Was purchased in 2000 and comprises of 50 acres of largely flat productive land. The site currently houses bare root seedling and transplant crops and is earmarked as a development site to provide the basis of automation for future container crops.

ROECLIFFE

This 6 acre site is largely dedicated to the production of retail quality crops and is almost entirely under polythene and glass that maximises growth and reduces our exposure to cold winters.

HOW TO ORDER

BY PHONE: 01423 330234
(OFFICE HOURS: 8am-4.30pm
MONDAY - FRIDAY)

BY POST: JOHNSONS OF WHIXLEY,
GILSTHWAITE LANE, WHIXLEY,
YORK, YO26 8AQ

BY WEBSITE: www.nurserymen.co.uk

BY EMAIL: info@nurserymen.co.uk



In the UK typical journey times by road are:

London: 4 - 4½ hours	Cambridge: 3 hours
Birmingham: 3 hours	Glasgow: 4 hours
Bristol: 4 - 4½ hours	Edinburgh: 4 hours



In the UK typical journey times by rail are:

London: 1¼ - 2 hours
Edinburgh: 2 - 2¼ hours

Visit us by train – our nearest station is a five minute walk from our head office, with links to York and Leeds every hour. Our nearest international airport is Leeds Bradford. We are happy to collect from either the station or airport by arrangement.



OUR SERVICES TO YOU

WE HAVE OUR OWN FLEET OF LORRIES AND VANS, COVERING THE LENGTH AND BREADTH OF THE UK

**OUR PRODUCTS ARE GROWN
TO AN AGREED TIMESCALE FOR
A HUGE RANGE OF PROJECTS**

OUR SERVICES TO YOU



GENERAL PRODUCTION

We grow and nurture a wide variety of our own stock across 150 acres of land on the exposed Vale of York for maximum hardiness. From hedging seedlings to heavy mature trees, shrubs and herbaceous plants. Our supply is in excess of 7 million trees and plants annually via a combination of home production and dedicated specialist supply partners.



NATIONWIDE DELIVERY NETWORK

We have our own fleet of lorries and vans, covering the length and breadth of the UK, giving us the flexibility to deliver quickly and efficiently, but with the necessary control over schedules to ensure quick turnarounds.



CONTRACT GROWING

We grow products within an agreed timescale for a wide range of horticultural projects, providing quality assured stock in bespoke sizes and forms at cost-effective prices - even outside the traditional growing season. We can accommodate bespoke customer requirements and budgets and offer advance payment options for greater discounts.



ESTABLISHED SUPPLY CHAIN

While we grow the majority of our stock on site, we also have a trusted supplier network in the UK and Europe, which we can tap into for ornamental, indigenous and nonindigenous stock at all stages of the season.



COMMERCIAL PROJECTS

We have years of experience in providing shrubs, herbaceous and trees for a variety of commercial projects, from retail parks, heritage sites to housing developments. We are a trusted solutions provider, working with contractors for public and private sector schemes across the UK.



CUSTOMER SERVICE TEAM

Each of our divisions has a dedicated team of account managers, to guide you throughout the buying process. They will provide estimates within 24 hours, understand your specific planting requirements and ensure you receive the correct pricing, plant material and delivery options every time.

NATIONWIDE DELIVERY

We deliver throughout the UK and Northern Ireland.

Our transport is a mix of self-owned and contract vehicles. With over 12,000 deliveries per year there are few places that we won't deliver to. In our opinion integrated self-management is the key to the added value that this key resource delivers.



DELIVERY TERMS

Delivery terms are relevant to the sector, scheme and location and are illustrated at the point of quotation.



OUR SECTORS

- WHOLESALE COMMERCIAL
- GARDEN CENTRE SALES
- WHOLESALE XPRESS (CASH & CARRY)

**ENHANCING COMMERCIAL
LANDSCAPES WITH QUALITY
PLANTS AND TREES
FOR 100 YEARS**

WHOLESALE COMMERCIAL

Our national commercial nursery is a trusted supplier to the amenity sector, with a unique offering, including the option of contract growing. Our logistics expertise and service is one of the reasons customers return to us time and time again – we deliver when others can't.

BESPOKE ORDERING

Our excellent resource, expertise and experience is illustrated by our competitive prices and complemented by our exceptional customer service. Each client benefits from a dedicated account manager who provides guidance throughout the quoting and buying process. We recognise the last-minute pressures landscape contractors face from main contractors and have developed a unique workflow system that often makes the impossible possible – we aim to make your life easier!

Our large transport fleet also allows us to react at short notice and achieve quick turnarounds, fulfilling orders usually within a few days. We pride ourselves on our efficiency and response to last minute orders, cost re-engineering and contractor requests.

CONTRACT GROWING

We were one of the pioneers behind the concept of contract growing in the 1980s to meet the needs of Garden Festivals and their landscape architects, contractors and designers. Contract growing puts supply and control directly in the hands of our customers. Providing quality assured stock in bespoke sizes and forms at cost-effective prices, we can respond to specific requests within an agreed timescale – ensuring you receive the plants you need, when you need them – even outside the traditional growing season.

We grow millions of plants, shrubs and trees for use in some of the most prestigious landscape schemes in the UK and offer bespoke production to match our customers' requirements and budgets. We also offer advance payment options, which can lead to greater discounts. Each contract receives professional horticultural input from start to finish from our experienced and dedicated project team.



WHOLESALE COMMERCIAL

MONDAY - FRIDAY: 08.00 AM - 16.30 PM

SATURDAY & SUNDAY: CLOSED

BANK HOLIDAYS: RESTRICTED HOURS

TEL: 01423 330234

EMAIL: info@nurserymen.co.uk

WEB: www.nurserymen.co.uk/wholesale-commercial/

GARDEN CENTRE SALES

We are a leading Garden Centre supplier and wholesale nursery for UK independent garden centres and other retail outlets.

We are a leading provider and grower of hardy garden plants and trees, supplying garden centres and horticultural retail outlets across the UK for over four decades. Our heritage as high-quality wholesale nursery growers helps us understand what consumers want and ensures that their exacting standards are consistently met. Our huge stock holding means we can cater for all needs and respond efficiently to market demand.

Grown on our North Yorkshire sites, our hardy plants are carefully tended and prepared for sale by experts, providing value, functionality and impact. We strive to provide our customers with the best deals and choice of stock by providing regular updates of new lines and offers on our Retail Availability List (RAL). Twice a week, we will share the best short-term deals available based on stock rotation, popularity and availability. Our team is constantly out and about around the nursery to check our stock and ensure our own inventory is sustained.



GARDEN CENTRE SALES

MONDAY - FRIDAY: 08.00 AM - 16.30 PM

SATURDAY & SUNDAY: CLOSED

BANK HOLIDAYS: RESTRICTED HOURS

TEL: 01423 332309

EMAIL: pauill@nurserymen.co.uk

WEB: www.nurserymen.co.uk/garden-centre-sales/

WHOLESALE XPRESS (CASH & CARRY)

As a one-stop-shop wholesale-only cash and carry, we provide an extensive range of quality stock to suit all planting solutions, with seasonal lines available all year round.

A one-stop trade shop for horticultural professionals including landscape gardeners, landscape contractors, garden designers, tree surgeons, estates, caravan parks, schools and universities, builders, property developers and hotels.

We're always on hand to help customers browse and buy from our wide range of quality stock. Based in North Yorkshire, we have close links to the main motorways that allows us to distribute regionally 5 days per week.



WHOLESALE XPRESS (CASH & CARRY)

MONDAY - FRIDAY: 08.00 AM - 16.30 PM

SATURDAY: OPEN SEASONALLY 08.00 AM - 12.00 PM SUNDAY: CLOSED

BANK HOLIDAYS: RESTRICTED HOURS

TEL: 01423 332324

EMAIL: wpc@nurserymen.co.uk

WEB: www.nurserymen.co.uk/wholesale-xpress

CASE STUDIES

TAKE A LOOK AT SOME OF OUR RECENT PROJECTS

“GIVEN SOME OF THE APARTMENTS IN THE DEVELOPMENT ARE ON THE MARKET FOR OVER £1 MILLION, THE QUALITY OF THE LANDSCAPING AND PLANTS MUST REFLECT THIS, SO WE TURNED TO JOHNSONS WHO HAVE AGAIN PLAYED A KEY PART IN HELPING US ACHIEVE OUR OBJECTIVES.”

RICHARD MCMONGLE, P1 CONTRACTORS



Donaldson's

DONALDSON'S, EDINBURGH

PRESTIGIOUS RESIDENTIAL SCHEME



WHOLESALE
COMMERCIAL

One of our long-standing customers, landscaping expert P1 Contractors, asked us to supply plants for the transformation of an iconic Scottish listed building into one of the most sought-after residential developments in Edinburgh.

Situated on the outskirts of Edinburgh, the former Donaldson's Hospital is one of the city's grandest and most recognisable buildings. Our customer required thousands of plants to help restore the grounds to their former glory.

Our supply of plants started in 2017 and has been worth over £125,000 to date, with varieties including 5,000 rootball Buxus (Box) for formal parterres, over 400 Taxus (Yew) rootballs for formal hedging, 7,000 shrubs and herbaceous plants, 83 trees, including 42 which were pleached specimens, and a large number of topiary boxed balls.



SANDYMOUTH, BUDE

HOLIDAY PARK

WHOLESALE
COMMERCIAL

Darwin Escapes, a luxury holiday resort provider tasked Johnsons with providing plants for one of its 22 holiday parks 'Sandymouth resort' that has recently undergone substantial modernisation indoors and outdoors.

Johnsons supplied over 9,000 shrubs, 8,000 hedging transplants, 800 herbaceous plants and 80 Hedera screens to the 'Sandymouth Resort', near the beautiful beach at Bude.

The plants supplied by us have helped transform the holiday park, which now boasts stunning landscaped gardens and communal areas.

Group Grounds and Utilities Manager for Darwin Escapes, Kris Sutton said: *"I have been using Johnsons of Whixley for a number of years on many landscapes and projects and would not hesitate in recommending them for quality stock, quick turnaround and expert advice."*



Sandymouth



Forth Road Bridge

FORTH ROAD BRIDGE, SCOTLAND

REPLACEMENT CROSSING,
FORTH ROAD BRIDGE



WHOLESALE
COMMERCIAL

Transport Scotland commissioned us to 'contract grow' plants for the prestigious Forth Road Bridge Replacement Crossing project. The six-year contract with Transport Scotland saw Johnsons supply a total of half a million native trees, hedging and larger specimen trees. The Replacement Crossing is the biggest transport infrastructure project in Scotland for a generation, comprising construction of a cable-stayed bridge – the Queensferry Crossing – across the Firth of Forth, together with upgrades to the connecting road network.

A spokesperson for Transport Scotland said: *"Johnsons are right to pride themselves on a very high standard of service delivery and have demonstrated a professional and helpful approach throughout our six-year relationship with them. Johnsons engages with the team to resolve any issues arising from programme changes and is always available to discuss issues and provide advice or information when required, especially for additional ad-hoc requests."*



COLINDALE GARDENS, LONDON

AWARD-WINNING INNER-CITY DEVELOPMENT

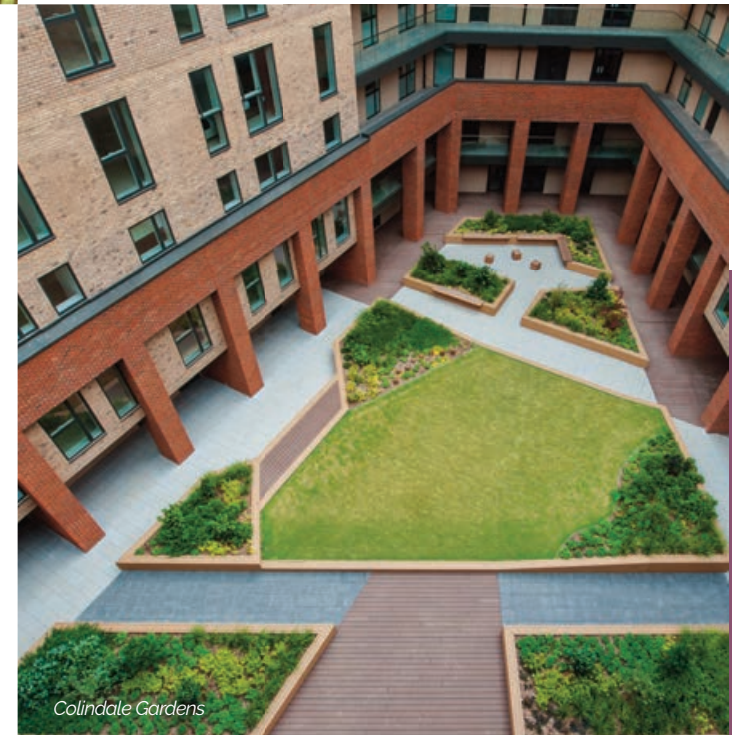
WHOLESALE
COMMERCIAL

London-based Kingston Landscape Group asked us to provide thousands of plants for Colindale Gardens, a £1 billion inner-city development scheme in Barnet, north-west London.

The new development project carried out by Redrow, one of Britain's largest housebuilders, involved creating 2,900 new one to four-bedroom homes in nine acres of grounds. The scheme incorporated a cycle path, walkways, cafes, shopping plaza, school, restaurants and a residents-only gym.

Our supply enhanced the grounds of the new developments and included more than 7,000 shrubs including 2L, 5L and 10L pots, 5,000 herbaceous plants, 900 hedging plants and a large amount of instant hedging.

Managing Director, Abi Evans, of Kingston Landscape Group said: *"Johnsons of Whixley have been a preferred supplier for over five years, they consistently supply high-quality stock within our budgets and can work with our demanding turnaround times."*



Colindale Gardens



WHOLESALE
COMMERCIAL



NATIONAL MEMORIAL ARBORETUM CENTRE, STAFFORDSHIRE

REMEMBRANCE CENTRE

A total of 38,000 plants were supplied to the National Memorial Arboretum Centre via our longstanding customer Gavin Jones Ltd. The £10.1 million facility was opened in 2018 by Prince William and incorporates a ceremonial courtyard, Heroes' Square, a dramatic drum-shaped rotunda, exhibition areas, café, retail area and a learning centre.

As the arboretum is open all year round, with around 200 separate events taking place each year, this had to be taken into consideration when designing and planning the planting scheme. The arboretum encompasses different areas that require different planting techniques, from wooded areas to formal gardens. The contract grow which saw 38,000 plants supplied by Johnsons of Whixley, included a wide mix of shrubs and herbaceous varieties including over 600 Allium 'Purple Sensation' 2L, over 300 Crocosmia 'George Davidson' 5L, over 100 Buxus Sempervirens 10L hedging plants, over 200 Carex Testacea 2L, over 500 Euonymus varieties and over 150 Helenium Waltraut.

Ricky Whiteman, Head of Estimating, Gavin Jones Ltd. said: "We were very proud to be awarded the soft landscaping package for such a prestigious and well-known site. We were pleased to be working alongside Johnsons of Whixley for the plant supply, having already developed a healthy relationship with the business over a number of years."

NATIONAL TRUST, STUDLEY ROYAL WATER GARDEN

RIPON

We have supplied thousands of plants to help restore the grounds of the historic Studley Royal water garden to their former glory. The estate is just 18 miles from Johnsons' HQ in North Yorkshire and is one of Europe's finest examples of an 18th-century garden. The planting is part of the National Trust's long-term vision for the garden. The scheme involves planting thousands of *Taxus baccata* (yew), supplied by Johnsons, to replace overgrown and dying hedges. The work includes restoring all bosquets – formal plantations of trees and shrubs with growing space inside, designed to give the effect of an enclosed room.

Michael Ridsdale, Head Gardener at Fountains Abbey and Studley Royal, said: "Working with our local industries is key to the continuing success of the Yorkshire economy. Johnson's and their former partners have been involved with this great estate for well over 50 years; locally produced stock is extremely important to us, even more so now as climate change is becoming a major issue for us all.

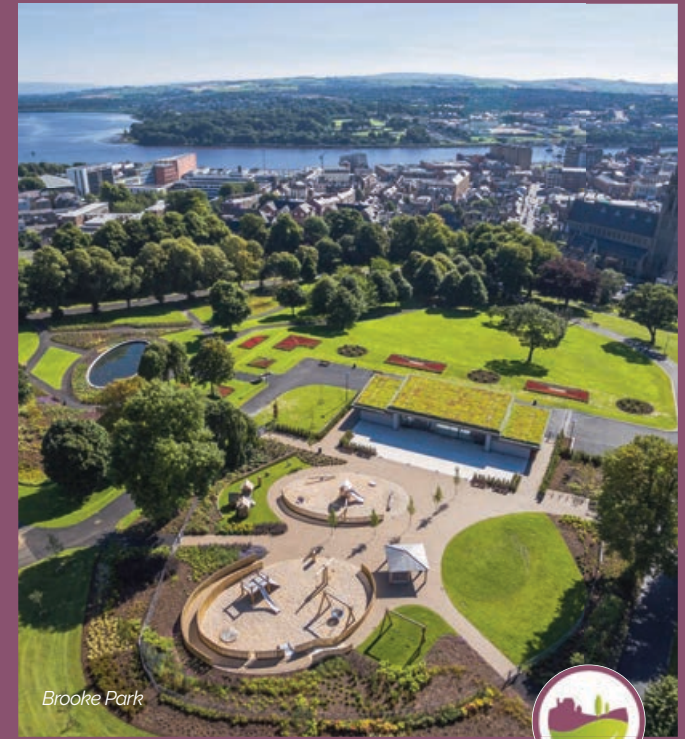
'Keeping it local' allows us to keep in constant contact with Johnsons; nothing can be better for the buyer than being able to jump in the van and see how their stock is growing. We have a lovely relationship with all the staff at Johnson's and it must be gratifying for them to be able to walk round the estate with their families and say we were part of that.'



National Memorial Arboretum Centre



WHOLESALE
COMMERCIAL



Brooke Park



BROOKE PARK, IRELAND

LONDONDERRY PARK

WHOLESALE
COMMERCIAL

We teamed up with County Tyrone Landscape experts, GB Landscapes who are specialists in hard and soft landscaping to provide a contract grow of plants worth £138,000 to Brooke Park, a historic outdoor space that holds strong memories for local residents. Our supply included, 13,000 shrubs, 14,500 herbaceous and grasses, 4,300 rhododendron and azalea, 1,300 roses and hedging and 130 trees.

Gary Baird, Managing Director at GB Landscapes, said: "This was a key account for us which needed to be site specific, to the highest of standards and on time to the tight scheduled plan. Johnsons of Whixley helped us contract grow specific plants for this project and the quality of plants were to specification and size. Johnsons of Whixley do an excellent job at consistently delivering value for money and quality stock on time. We are more than happy to recommend their services. They are instrumental in us delivering quality to our clients and for that we are truly grateful and appreciative."

FRON GOCH GARDEN CENTRE CAERNARFON, WALES



We have been working with fellow family business Fron Goch Garden Centre for over 15 years, the Caernarfon, Wales-based business is an ever-evolving garden centre and restaurant with a unique mixture of plants, gardening accessories, home décor, outdoor furniture, gifts and local foods which can be tasted in their award-winning restaurant.

Fron Goch Garden Centre has purchased thousands of plants from us over the years including varieties from all of our ranges including our patio range and prestige ranges from 3L-10L sized plants, we look forward to working with this great family business for many years to come.

Plant area manager, Melanie Livingston for Fron Goch, said: *"We love Johnsons plants. They choose great varieties and cultivars which suit our customers mountain and coastal gardens. The plants are always well presented and most importantly, they sell!"*



Fron Goch Garden Centre



The Arium, Leeds Parks Nursery

THE ARIUM, LEEDS PARKS NURSERY LEEDS



Our supply to the Arium started back in 2017 when the new nursery opened. Since then we have supplied thousands of plants from all of our ranges. The Arium is the largest local authority nursery in the country and is capable of growing three million plants per year all of which are used for roundabouts, flower beds, school grounds and other locations across the city. The Arium is open to members of the general public and facilities on-site include a café, shop and outdoor children's play area.

The Arium's senior supervisor, Lee Cawood, said: *"As a council, we've enjoyed an excellent relationship with Johnsons of Whixley for generations. They've been a key supplier to our amenity projects for a number of years, and we're delighted to be partnering with them for The Arium. The level of service and the overall quality of product that we've received from Johnsons has been first class, and we look forward to further strengthening our relationship with the business in the years ahead."*

LANCASTERS HOME & GARDEN WALTHAMSTOW, LONDON



London based Lancasters Home & Garden appointed us to supply to their garden centre back in 2018 and have become a regular customer with thousands of our plants supplied to them over the last year.

The family-run boutique garden & home store offers a vast range of seasonal & perennial plants, garden supplies, tools and accessories.

Paul Sutton, Owner of Lancasters Home & Garden, said: *"We have built up a great relationship with Johnsons of Whixley and are always impressed with their quick turnaround from order to delivery, I can order on a Monday and have the plants by the end of the week, all in all they offer a great service and we look forward to working with them for many years to come."*



Lancasters Home & Garden

SUMMER IN THE CITY, NEWCASTLE

SOUTHERN GREEN LTD

Newcastle's iconic Quayside on the River Tyne was brought to life as part of the NE1 Summer in the City project during the summer of 2021 which transformed a number of outdoor spaces across the city. Our customer Southern Green Ltd was commissioned to design and install sixty-nine planters by their client NE1 Ltd with the planting interventions designed and delivered within 10 weeks, including the procurement of all materials. Southern Green Ltd called upon Johnsons to supply a large number of plants including Carex Testacea, Achillea 'Cloth of Gold' Hebe 'Sutherlandii', Lavandula 'Munstead', Rudbeckia 'Goldsturm', Salvia 'Caradonna', Astilbe 'Fanal', Miscanthus 'Gracillimus, Campanula 'Perta Blue' and Verbena bonariensis. The 'Summer in the City' project encouraged tourists and locals into the city, with new attractions and activities which were enjoyed by all age groups.

Liam Haggarty, Southern Green Director, said: *"Johnsons are always great to work with and provide the highest quality plant stock. They agreed to a nursery visit at very short notice, and then collated and delivered everything to our exacting specification within a matter of days, which was one of the key factors to the successful delivery of the works on site."*



WHOLESALE
XPRESS



Barrett Show Homes



WHOLESALE
XPRESS

BARRETT SHOW HOMES, YORKSHIRE

CBS TREE SURGEONS

We have been working with Steve Clayton from CBS Tree Surgeons for ten years; the relationship has seen hundreds and thousands of shrubs, herbaceous, hedging and trees enhance the grounds of Barrett show homes in the Yorkshire region.

Our one-stop-shop has provided seasonal looking good stock at our customer's request and demand. Varieties we have supplied over the years have included large numbers of topiary, specimen shrubs, 2L & 3L shrubs, herbaceous, trees, a wide range of hedging and a large number of sundries.

Steve Clayton, CBS Tree Surgeons said: *"Johnsons have a great credit facility, friendly staff and an excellent choice of plants with top up stock available on the wider nursery. We have used them for our show home planting for over 10 years and would highly recommend them."*





Grantley Hall



WHOLESALE
XPRESS

GRANTLEY HALL, RIPON

LUXURY HOTEL AND SPA

We were asked to provide thousands of plants for the grounds of Grantley Hall, a new five-star luxury hotel and spa in the Yorkshire Dales. Grantley Hall, a Grade II listed property in Ripon, has undergone a complete restoration. Thousands of plants were required to add colour and depth to the beautifully manicured lawns and gardens. The aim was to restore the grounds to their original splendour, in keeping with the hall's rich history.

We provided large topiary, such as Fagus (beech) domes and Buxus (box) balls, along with thousands of herbaceous, shrubs and grasses for the borders. We also supplied large hedges, including a large number of Hedera Hibernica (ivy) screens to create partitions within the gardens.

“WE WERE VERY KEEN TO USE A LOCAL BUSINESS TO SUPPLY GRANTLEY HALL AND ARE VERY FORTUNATE TO HAVE THE JOHNSONS OF WHIXLEY NURSERY ONLY A SHORT DISTANCE AWAY. I HAVE FOUND THAT THE PLANT AVAILABILITY HAS ALWAYS MET MY REQUIREMENTS AND THE CASH AND CARRY SERVICE IN PARTICULAR IS ALWAYS WELL STOCKED WITH A GOOD SELECTION, A GREAT TEAM OF DEDICATED STAFF AND A GREAT EXAMPLE OF A PROFESSIONAL FAMILY BUSINESS.”

PAUL FORREST, ESTATE MANAGER, GRANTLEY HALL

FORMAL GARDEN, ILKLEY

HELEN TAYLOR GARDEN DESIGN



WHOLESALE
XPRESS

We teamed up with Burley in Wharfedale Garden Designer Helen Taylor to create a formal delight in the Ilkley area. Helen developed a formal parterre back garden for her client with low buxus hedging and a lawn bisected by narrow brick paths which lead to a central antique figure that is surrounded by variegated holly and masses of purple from the Lavandula 'Hidcote' that flower in the summer months. Other garden features include a focal tea house, a stunning rose border, a mixed herbaceous border, a shady ornamental woodland, fernery, and shaded front garden. Johnsons supplied plants for all of these different areas.

Helen Taylor Garden Design commented, *“We have developed a great working relationship with Johnsons of Whixley over 20 years. The staff are always prompt and helpful. Johnsons can supply the full range of plants for all our needs from alpines and herbs to advanced nursery stock and topiary so it's our 'go - to' nursery. We like that the nursery is local to where we work so we can inspect the plants prior to dispatch, discuss substitutes and know we are happy with the order before it arrives on site.”*



Formal Garden, Ilkley

A close-up photograph of a butterfly with vibrant red, black, and blue wings perched on a cluster of small purple flowers. The background is a soft, out-of-focus green. The butterfly's wings are detailed with black and blue patterns, and its body is dark. The purple flowers are in sharp focus in the foreground.

NATURAL WORLD

JOHNSONS AND OUR ENVIRONMENTAL SYSTEM

**JOHNSONS IS ONE OF THE
FEW BUSINESSES THAT CAN
CLAIM TO BE A TRUE NET
CONTRIBUTOR TO THE
ENVIRONMENT**

ENVIRONMENT

Johnsons is one of the few businesses that can claim to be a true net contributor to the environment. We invest a significant amount each year to ensure our continued contribution to the world around us.

From reducing our use of plastics in the business to low emission vehicles, we actively manage and audit the environmental system through a number of dedicated internal managers. Read our full environmental contributions, commitments and credentials on our website www.nurserymen.co.uk

BEES

With our nursery being the perfect place to house our own hives, we installed an onsite apiary that currently houses up to 800,000 bees during the summer months. As bees travel up to three miles for pollen, it means all of our local sites will be used by them.

WILDLIFE

Located in the heart of Yorkshire, our nursery is surrounded by open landscapes which are home to a wide range of wildlife. Over the years we have seen many animals across our nursery, including foxes, rabbits, hares, deer, butterflies, red kites, sparrow hawks, oystercatchers and buzzards.

PONDS

In keeping with the natural environment of our land, we have four ponds across our sites. To preserve wildlife these are left largely untouched and are currently home to ducks, geese, grey herons, frogs, and of course, plenty of fish.

SUSTAINABILITY

We have made a conscious effort across our business to reduce the amount of plastic used. Along with little changes, such as using glass milk bottles, we are trialling recyclable pots with a view to rolling them out permanently by 2022.



NET CONTRIBUTORS TO THE ENVIRONMENT



DID YOU KNOW?

We sell in excess of 7 million plants and trees per year.



IRRIGATION

Our irrigation system uses rainfall and water runoff from our reservoirs.



COMPOST

The use of peat in compost has been reduced by 40% by using crushed bark and wood fibre as alternatives.



SURROUNDINGS

The plants we supply embellish their surroundings and make a positive contribution to the environment.



OUR VEHICLES

All our commercial vehicles now conform to the low emission standards.



BIOMASS BOILER

Our 200kwh Biomass boiler has reduced the use of heating oil and provides winter protection for 1000's of plants.



RE-CYCLING

Externally audited re-cycling for all waste, including plastic pots.



CO₂ REDUCTION

Our plants help reduce Carbon Dioxide in the air, reducing the greenhouse gases that create pollution.

BSI ISO 9001:2015 & 14001:2015 QUALITY & ENVIRONMENTAL STANDARDS

Our quality standard credentials have underpinned business operations since 1992. These systems bring a daily benefit to our business, customers and suppliers ensuring consistent standards:-

-  Demonstrate compliance with current and future statutory and regulatory requirements.
-  Increase leadership involvement and engagement of employees.
-  Improve company reputation and the confidence of stakeholders through strategic communication.
-  Achieve strategic business aims by incorporating environmental issues into business management.
-  Provide a competitive and financial advantage through improved efficiencies and reduced costs.
-  Encourage better environmental performance of suppliers by integrating them into the organisation's business systems.
-  Provide customers undertaking projects with a high environmental assurance to prove compliance at all stages of supply.
-  Manage, reduce, and recycle a significant proportion of annual waste production.
-  Limit and control the use of natural resources such as water, peat, plastic etc.
-  Insures we fulfil our stated commitments.



OUR SAFEGUARDING MEASURES

TO ENSURE PLANT HEALTH, ENVIRONMENTAL SUPPORT AND CUSTOMER SATISFACTION



INVESTMENT

Being aware of our responsibilities we have invested in equipment and training that allows us to test incoming stock for disease or pathogens. There are very few European Nurseries with this capability.



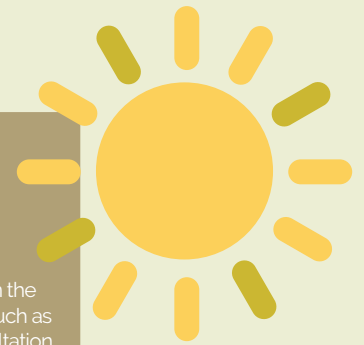
MANAGEMENT

Our expert team is responsible for ensuring that all plant material arriving on site and subsequently being dispatched is monitored for the presence of pests and diseases and trueness to type, variety, and appropriate size.



HIGH RISK ISSUES

A focussed approach is taken on the management of high risk issues such as pests and diseases, regular consultation with various government departments, on water use, waste management, peat substitution, availability of labour, ethical use of fuels, packaging waste, and general sympathy with the environment.



COMPLIANCE

Since 1992 Johnsons have been accredited with ISO 9001, the current international quality standard ensuring compliance with quality management and product standards for all company activities. We have also been accredited with ISO 14001 in relation to our adherence to the environmental standard.



APHA REGULATIONS

The company is subject to the regulations relating to the Animal and Plant Health Agency (APHA) and their on-site inspections.

EXTERNAL INSPECTION

To verify Quality and Environmental status, the company administration and management systems are audited twice each year by external auditors, Plant Health Officers, H&S representatives and others. 8 members of staff are trained internal auditors, who audit all 21 of our written procedures each year. They cannot audit their own area of responsibility, thus ensuring cross-unit compliance.

The company has developed a photographic guide to major plant pests & diseases, and this is available to all staff.



PLANT DISEASES

These appear to be becoming more aggressive with a greater impact on our environmental wellbeing. The plant disease *Xylella fastidiosa* was first found in Europe in 2013 on Olive trees in southern Italy, the host being killed due to interruption of water movement within the plant. It has now spread to Spain, Portugal and southern France. The vector is the Spittle Bug, which feeds on the sap of plants and is difficult to control. Research has shown that up to 350 plant species could become infected, with death of the plant resulting from attack.

We have addressed the problem by cutting out any purchases from the southern Mediterranean countries, including the South of France.



PLANT HEALTH SPECIALIST

We are acutely aware of our responsibilities and have taken on a Plant Health Specialist to ensure that our staff are fully and appropriately trained and our plant health systems are robust.



TRACEABILITY

Is important for the sale of plants and their potential diseases, Johnsons maintain a comprehensive Plant Passporting régime to ensure lifetime traceability from propagation to ultimate sale.

Oak Processionary Moth caterpillars have infected oak trees in Europe for some time, but are now developing habitats in the south of England. Imported oaks must carry some of the responsibility for this movement, and for this reason we no longer import oaks with a girth of more than 6-8cm. The caterpillars can defoliate trees and the hairs of the caterpillars can cause respiratory issues and skin rashes in humans. They are recognisable for their habit of moving around the tree in close procession.



INNOVATIVE TECHNOLOGY

JOHNSONS CONTINUES TO DRIVE INNOVATION IN THE HORTICULTURAL INDUSTRY



TECHNOLOGY

AUTOMATION

Hardy Nursery Stock is not a sector of Horticulture synonymous with automation due to the specialist and diverse nature of the produce. However, we continue to invest in appropriate mechanisation which currently includes high output potting machine's and conveyors on all major production units, 11 forklifts (including all-terrain), specialist trimming equipment, automated/computer-controlled irrigation, nutrient dosing machinery, plant preparation production line, trolley wrapping turntables and trolley watering systems.

SAP – MRP SYSTEM

We always believed that our 'changing' produce required specialist horticultural inventory software to manage our idiosyncrasies. In 2009 we installed SAP Business One after a lengthy 'beauty parade' process – we recognised the power, flexibility and open nature of modern manufacturing systems and realised that our challenges would be that of any other modern manufacturing business. SAP brought us information and the 'power' to support decisions. At the point of go-live, we consolidated eleven separate bespoke system process into the one application.

DRONE

The scale of our operation spreads over a number of disparate sites. This has traditionally been problematic in terms of monitoring and assessing stock, the problem was significantly reduced when we purchased our DJI Mavic Drone. Not only do we use the footage to portray the extent of our operation for marketing purposes we now use the device for summary stock control purposes and to identify areas requiring cultural activity and increased/reduced irrigation. Our two pilots Daren and Terry are currently in the process of receiving training and formal accreditation.

WORKFLOW

Is a bespoke in-house system that identifies a range of key system status's and consolidates all mission-critical processes on to one screen which is driven by iconography. An 'at a glance' snapshot into all elements that contribute to order fulfilment.

IVENDE

Is a specialist POS (Point of Sale) skin that sits above native SAP and provides an intelligent and intuitive front end for till based transactions in our Wholesale Plant Centre.





OUR PEOPLE

PLAY AN IMPORTANT ROLE IN THE GROWTH OF THE BUSINESS

**OUR EMPLOYEES DEFINE
WHAT OUR BUSINESS IS
TODAY AND FORM PART OF THE
'WIDER' JOHNSONS FAMILY**

WHAT OUR STAFF SAY...

TOM WATKINS (CATTAL DEPUTY MANAGER)

Length of service?

Since summer 2018.

What do you enjoy most about being employed by Johnsons?

Working with plants and developing a career around this. New challenges and obstacles will ensure my progress.

How have Johnsons supported you in your career?

They have provided support, help and advice during the process which has greatly furthered my knowledge. Any project/trial work has been fully supported and external European placements have enhanced the experience significantly.

How does working at Johnsons compare to previous jobs you've had?

The family ethos is evident throughout the business. Working at Johnsons is very much a team effort despite distinct departments.

What's your proudest career moment and personal achievement?

Managing the Cattal production facility in the absence of the unit manager. This was a huge responsibility and the company showed a lot of faith in me. I have since taken on the role of Cattal Deputy Manager having successfully completed my management trainee programme.

How do Johnsons make you feel appreciated?

Being allowed sufficient latitude to try new things and the faith that is evident in extra responsibility. A job well done is rewarded with praise.

"WORKING AT JOHNSONS IS VERY MUCH A TEAM EFFORT DESPITE DISTINCT DEPARTMENTS."



MICK HUBY (ROECLIFFE NURSERY MANAGER)

What was the year you started at Johnsons?

June 1976, my first job was hoeing conifers at Cattal with Bill Beasley, Harry Kettlewell, Eric Crowl and Jim Bryon.

How did you come about working at Johnsons?

I had finished school and my mother had seen an advert in the local paper for part time work over the summer. I started as a casual.

Did you work anywhere else prior to Johnsons?

No, straight from school. I immediately liked the job, particularly working outside. The field foreman told John Richardson that I enjoyed it and was keen to learn. John asked if I wanted to stay on and take an apprenticeship in hardy nursery stock.

What was your first position in the company?

I started as a nursery worker and moved on to be a field supervisor. My first major role was to be a spray manager at Newlands in the early eighties.

How has the company changed over the years?

Massively. Staff numbers, stock volumes, varieties grown etc. The use of IT and technology and our approach to transport and a just in time mentality.

What is your most memorable day at Johnsons?

When I was given promotion to be field unit manager and told that I would be running the 75 acre tree production site down at Ryther!

What has made you stay here all these years?

I still like the different challenges of growing new stock and seeing the good results. I like working outside. No one day has been the same and the friendships I have made with the other people who work here.

What makes Johnsons a good employee?

Even though the company has grown over the years it is still a family run business and because of that reason it cares for its staff as one big team. It shows appreciation on a regular basis through bonus, voucher card, enhanced holiday and small treats in recognition of a great effort on a regular basis.



CLAIRE HORNER (DEPUTY PLANT CENTRE MANAGER)

How many years have you been at Johnsons?

Twenty years to date. I started work in the summer of 1999, I remember because it was the summer when we had a total solar eclipse!

What do you enjoy most about Johnsons?

The thing I enjoy the most about working here at Johnsons of Whixley is that there are never two days alike. It's certainly not boring.

How have Johnsons supported you?

The company has supported my career by providing access to training courses and arranging meetings with other growers in the UK and in Europe. This has broadened my knowledge.

What other jobs have you had other than Johnsons?

I had previously travelled around a lot through the day visiting clients and sites. I like that I am based in one place and spend most of my time at Johnsons of Whixley main site, Newlands.

What's your proudest career moment?

For me, my proudest career moment is being part of a really successful cash and carry team, which is going from strength to strength. I feel I belong to this team and think that what we achieve together is greater than any individual success.

My greatest personal achievement would be meeting my husband here at work. It was love across the muddy trenches; we met while working with the field grown trees one winter; that was 18 years ago.

How do Johnsons show appreciation?

I love all the special days we have which are oriented around foody treats. From fish and chips to our month end butties, it may not seem like much, but these treats are what make me feel appreciated.



CAREERS AT JOHNSONS

We employ a workforce of 110, rising to 160 seasonally, across all three divisions, from administration and managerial to horticultural roles.

We nurture all of our staff and talent by providing continual career development opportunities, from training, support and benefits including our rising stars programme and management training.

CUSTOMER-FACING

Whether it's working in our onsite Cash & Carry, delivering products or based in our sales team, we have a range of roles that are all customer-facing.

DISPATCH

A fast moving vital part of the process – our dispatch team coordinates the delivery of thousands of plants each day, they ensure plants are picked and called in to dovetail with outgoing loads on our high profile transport fleet.

OFFICE

Our main office is the 'beating heart' of Johnsons operations – sales, purchasing, accounts, production, stock and operations all converge to ensure maximum efficiency and customer satisfaction.

NURSERY

The nursery is our production line and warehouse. Our staff grow and raise millions of plants annually. Staff work to exacting standards and operate to tight deadlines within a beautiful natural environment.

Our employees define what our business is today and form part of the 'wider' Johnsons family. We always reward staff for their dedication and hard work.



WORKING WITH CHARITIES

We love giving something back to the community and getting our hands dirty, supporting local, regional and national charities and projects.

Over the years we have provided plants and trees to improve outdoor space within numerous organisations across the country. Below is a sample of recent schemes.

SPRINGWATER SPECIAL NEEDS SCHOOL, HARROGATE

We teamed up with Bettys & Taylors Group to provide over £5,500 worth of plants to Springwater, a special needs school in Harrogate. 1,430 plants were provided and donated for its new interactive and sensory stimulating playground that will allow children with disabilities to safely play alongside their friends. Plants have been carefully chosen with sensory varieties such as Lavender, Mint and Rosemary included in the planting plan.

GREENFIELDS COMMUNITY GARDEN, YORK

This is just one of four volunteering projects our staff have got involved with through York Cares in recent years. Four of our staff contributed to this project which included renovating part of the Greenfields community garden on Haxby road which included cutting back brambles, pruning fruit bushes, pulling up weeds and turning compost.

THE ROOTS FOUNDATION, SWANSEA

We teamed up with BBC Children in Need and DIY SOS to help a local charity in Swansea rebuild their community centre. We donated a range of large trees, hedging and shrubs as part of the redevelopment of the centre and its grounds.



The Roots Foundation, Swansea



Greenfields Community Garden, York



Springwater Special Needs School, Harrogate



The Roots Foundation, Swansea

A DRINK ON US...

A GLASS OF ALE, WINE OR A REFRESHING GIN AND TONIC

**WE ARE DELIGHTED
TO SAY THANK YOU –
TO OUR CUSTOMERS**



QUIXLEY GIN, CENTENARY WINE, WHIXLEY GOLD AND COPPER BEECH ALES

We recognise the occasional benefit of a glass of Ale, wine, or a refreshing Gin and Tonic sitting in one's chair after a hard day at work.

With this in mind, we worked with local brewers 'Rudgate of Tockwith' to create a finely balanced Blonde Ale called 'Whixley Gold' and a well-rounded ruby Dark Ale called 'Copper Beech'. Such was the success of 'Johnsons Ale' that we decided to develop our own Gin with the help of Gin Distillers Corks & Casks of Masham, North Yorkshire. Following a superb afternoon developing a number of prototypes we settled on our exquisite Quixley London Dry Gin which carries a subtle but highly appropriate hint of Cherry.

Our Centenary wine was made to celebrate 100 years of Johnsons. The business was originally founded in 1921 by war veteran Eric Johnson and has been run by three generations of the Richardson family since 1964. We celebrated our 100th birthday in June 2021.

Our 'Quixley Gin' is named after the village of Whixley formally known as 'Quixley' in the 14th century. For many years, Quixley (now Whixley) was famous for cherries which were originally cultivated by the friars from the Priory of Knaresborough and, in later times, were sold in London at Covent Garden. A great day of celebration was the annual Whixley Cherry Feast held on the first Sunday in August. The word feast meant "festival" rather than the scoffing of huge amounts of the fruit too!

We are pleased to say that a growing number of customers are reporting the benefit of our rejuvenating Ale, wine and Gin and we are delighted to occasionally say *'thank you - have a drink on us!'*



SHRUBS TOP 100

AN OVERVIEW OF OUR TOP 100 SHRUBS

SKIMMIA RUBELLA

POSITION: FULL SHADE

FLOWER PERIOD: APRIL AND MAY

Are known for their dark red flower buds that are produced in autumn and last through the winter until the flowers open in spring - an excellent plant for a patio pot or border.

VIBURNUM TINUS

POSITION: FULL SUN – PARTIAL SHADE

FLOWER PERIOD: DECEMBER – APRIL

An excellent evergreen shrub with dark green leaves and clusters of small white flowers. Ideal for brightening up a part shaded area of the garden over winter and into spring when little else is flowering.



PHOTINIA 'CARRE ROUGE'

POSITION: FULL SUN – PARTIAL SHADE

A tremendous compact variety that has blood-red young growth and smaller leaves reaching up to 2.5m tall – nearly half the size of its mother plant Photinia 'Red Robin'. Its height makes it a much more appealing hedging variety and an easily managed landscape shrub.



EUONYMUS JAPONICUS 'GREEN SPIRE'

POSITION: FULL SUN – PARTIAL SHADE

An upright compact evergreen shrub with dark green foliage. An ideal substitute for Buxus that will easily trim into a low hedge creating the perfect garden border.



HEBE 'LITTLE LEAVES'

POSITION: FULL SUN – PARTIAL SHADE

Are a great alternative to traditional cultivars such as Hebe Red Edge, as they are much more disease resistant. This variety has healthy red/purple leaf tips that have a neat, round dense growing habit that will require little trimming.



SHRUBS TOP 100

This alphabetical list of shrubs provides an indication of our most purchased shrub lines. Although the purchase of some plants in large quantities may affect their general popularity position. The majority of these lines are available in 2L, 3L, 5L and 10L pots. **For more information on a plant from this list, call us on 01423 330234.**

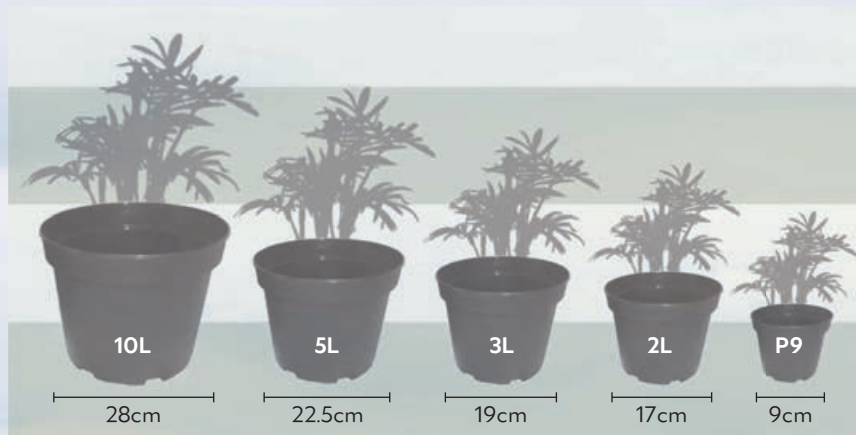
PLANT SPECIES	MOIST	DRY	EXPOSED	SHELTERED	PART SHADE	SUN	ACID	ALKALINE
<i>Aucuba jap. 'Crotonifolia'</i>	✓		✓	✓	✓	✓	✓	✓
<i>Berberis darwinii</i>	✓	✓	✓	✓	✓	✓	✓	✓
<i>Berberis thunb. 'Atrop. Nana'</i>	✓	✓	✓	✓	✓	✓	✓	✓
<i>Berberis thunb. 'Atropurpurea'</i>	✓	✓	✓	✓	✓	✓	✓	✓
<i>Brachyglottis 'Sunshine'</i>	✓	✓	✓	✓	✓	✓	✓	✓
<i>Buddleja davidii</i>		✓	✓	✓	✓	✓	✓	✓
<i>Buxus sempervirens</i>		✓	✓	✓	✓	✓	✓	✓
<i>Calluna vulgaris</i>	✓		✓	✓		✓	✓	
<i>Ceanothus 'Blue Mound'</i>		✓		✓		✓		✓
<i>Ceanothus thyrsiflorus repens</i>		✓		✓		✓		✓
<i>Chaenomeles sup. 'Crimson & Gold'</i>		✓	✓	✓	✓	✓	✓	✓
<i>Choisya 'Aztec Pearl'</i>	✓	✓		✓		✓	✓	✓
<i>Choisya ternata</i>	✓	✓		✓		✓	✓	✓
<i>Choisya ternata 'Sundance'</i>	✓	✓		✓		✓	✓	✓
<i>Cistus 'Silver Pink'</i>		✓		✓		✓	✓	✓
<i>Cornus alba 'Elegantissima'</i>	✓	✓	✓	✓	✓	✓	✓	
<i>Cornus alba 'Sibirica'</i>	✓	✓	✓	✓	✓	✓	✓	
<i>Cornus sang. 'Midwinter Fire'</i>	✓	✓	✓	✓	✓	✓	✓	✓
<i>Cornus stolonifera 'Flaviramea'</i>	✓	✓	✓	✓	✓	✓	✓	✓
<i>Cotoneaster consp. 'Decorus'</i>		✓	✓	✓	✓	✓	✓	✓
<i>Cotoneaster 'Coral Beauty'</i>	✓	✓	✓	✓	✓	✓	✓	✓
<i>Cotoneaster dammeri</i>	✓	✓	✓	✓	✓	✓	✓	✓
<i>Cotoneaster microphyllus</i>	✓	✓	✓	✓	✓	✓	✓	✓
<i>Elaeagnus ebbingei</i>		✓	✓	✓	✓	✓	✓	✓
<i>Erica carnea</i>	✓		✓	✓	✓	✓	✓	✓
<i>Escallonia 'Apple Blossom'</i>	✓		✓	✓	✓	✓	✓	✓
<i>Escallonia 'Donard Seedling'</i>	✓		✓	✓	✓	✓	✓	✓
<i>Escallonia 'Iveyi'</i>	✓		✓	✓	✓	✓	✓	✓
<i>Escallonia rubra 'Macrantha'</i>	✓		✓	✓	✓	✓	✓	✓
<i>Euonymus fort. 'Emerald Gaiety'</i>	✓		✓	✓	✓	✓	✓	✓
<i>Euonymus fort. 'Emerald 'n' Gold'</i>	✓		✓	✓	✓	✓	✓	✓
<i>Euonymus jap. 'Greenspire'</i>	✓		✓	✓	✓	✓	✓	✓
<i>Fuchsia 'Mrs Popple'</i>		✓		✓	✓	✓	✓	✓
<i>Griselinia littoralis</i>	✓		✓	✓		✓	✓	✓

PLANT SPECIES	MOIST	DRY	EXPOSED	SHELTERED	PART SHADE	SUN	ACID	ALKALINE
<i>Hebe albicans 'Red Edge'</i>	✓		✓	✓	✓	✓		✓
<i>Hebe 'Green Globe'</i>	✓		✓	✓	✓	✓		✓
<i>Hebe 'Little Leaves'</i>	✓		✓	✓	✓	✓		✓
<i>Hebe 'Marjorie'</i>	✓		✓	✓	✓	✓		✓
<i>Hebe 'Midsummer Beauty'</i>	✓		✓	✓	✓	✓		✓
<i>Hebe 'Mrs Winder'</i>	✓		✓	✓	✓	✓		✓
<i>Hebe ping. 'Pagei'</i>	✓		✓	✓	✓	✓		✓
<i>Hebe ping. 'Sutherlandii'</i>	✓		✓	✓	✓	✓		✓
<i>Hebe Rakaiensis</i>	✓		✓	✓	✓	✓		✓
<i>Hedera helix</i>	✓	✓	✓	✓	✓	✓	✓	✓
<i>Hedera helix 'Glacier'</i>	✓	✓	✓	✓	✓	✓	✓	✓
<i>Hedera helix 'Green Ripple'</i>	✓	✓	✓	✓	✓	✓	✓	✓
<i>Hedera hibernica</i>	✓	✓	✓	✓	✓	✓	✓	✓
<i>Hydrangea arbor. 'Annabelle'</i>	✓		✓	✓	✓	✓	✓	
<i>Hydrangea macr. 'Blue Wave'</i>	✓		✓	✓	✓	✓	✓	
<i>Hydrangea pan. 'Limelight'</i>	✓		✓	✓	✓	✓	✓	✓
<i>Hypericum Calycinum</i>		✓	✓	✓	✓	✓	✓	✓
<i>Hypericum 'Hidcote'</i>		✓	✓	✓	✓	✓	✓	✓
<i>Hypericum moserianum</i>		✓	✓	✓	✓	✓	✓	✓
<i>Ilex aquifolium</i>	✓		✓	✓	✓	✓	✓	✓
<i>Ilex crenata</i>	✓		✓	✓	✓	✓	✓	✓
<i>Lavandula 'Hidcote'</i>		✓		✓		✓	✓	✓
<i>Lavandula 'Munstead'</i>		✓		✓		✓	✓	✓
<i>Lonicera nit. 'Baggesen's Gold'</i>	✓	✓	✓	✓	✓	✓	✓	✓
<i>Lonicera nitida</i>	✓	✓	✓	✓	✓	✓	✓	✓
<i>Lonicera periclymenum</i>	✓	✓	✓	✓	✓	✓	✓	✓
<i>Lonicera pil. 'Maygreen'</i>		✓	✓	✓	✓	✓	✓	✓
<i>Lonicera pileata</i>		✓	✓	✓	✓	✓	✓	✓
<i>Mahonia aquifolium</i>	✓	✓	✓	✓	✓	✓	✓	✓
<i>Mahonia media 'Charity'</i>	✓	✓	✓	✓	✓	✓	✓	✓
<i>Mahonia media 'Winter Sun'</i>	✓	✓	✓	✓	✓	✓	✓	✓
<i>Pachysandra terminalis</i>	✓		✓	✓	✓	✓	✓	✓
<i>Perovskia 'Blue Spire'</i>		✓	✓	✓	✓	✓	✓	✓

PLANT SPECIES	MOIST	DRY	EXPOSED	SHELTERED	PART SHADE	SUN	ACID	ALKALINE
<i>Photinia 'Carre Rouge'</i>	✓		✓	✓	✓	✓	✓	
<i>Photinia fraseri 'Red Robin'</i>	✓		✓	✓	✓	✓	✓	
<i>Photinia 'Little Red Robin'</i>	✓		✓	✓	✓	✓	✓	
<i>Potentilla frut. 'Abbotswood'</i>	✓	✓	✓	✓	✓	✓	✓	✓
<i>Potentilla frut. 'Red Ace'</i>	✓	✓	✓	✓	✓	✓	✓	✓
<i>Prunus laur. 'Otto Luyken'</i>	✓		✓	✓	✓	✓	✓	✓
<i>Prunus laur. 'Rotundifolia'</i>	✓		✓	✓	✓	✓	✓	✓
<i>Prunus laur. 'Zabeliana'</i>	✓		✓	✓	✓	✓	✓	✓
<i>Prunus lusitanica</i>	✓		✓	✓	✓	✓	✓	✓
<i>Rosa 'Kent' (White)</i>	✓	✓	✓	✓	✓	✓	✓	✓
<i>Rosmarinus officinalis</i>		✓	✓	✓	✓	✓	✓	✓
<i>Rubus 'Betty Ashburner'</i>	✓	✓	✓	✓	✓	✓	✓	✓
<i>Rubus Tricolor</i>	✓	✓	✓	✓	✓	✓	✓	✓
<i>Santolina incana</i>		✓		✓	✓	✓	✓	✓
<i>Sarcococca confusa</i>	✓	✓		✓	✓	✓	✓	✓
<i>Skimmia jap. 'Rubella'</i>	✓			✓	✓	✓	✓	
<i>Skimmia x con. 'Kew Green'</i>	✓			✓	✓	✓	✓	
<i>Spiraea 'Anthony Waterer'</i>	✓	✓	✓	✓	✓	✓	✓	✓
<i>Spiraea japonica 'Firelight'</i>	✓	✓	✓	✓	✓	✓	✓	✓
<i>Spiraea japonica 'Goldflame'</i>	✓	✓	✓	✓	✓	✓	✓	✓
<i>Symphoricarpos chen. 'Hancock'</i>	✓	✓	✓	✓	✓	✓	✓	✓
<i>Taxus baccata</i>	✓	✓	✓	✓	✓	✓	✓	✓
<i>Ulex europaeus</i>		✓	✓	✓		✓	✓	
<i>Viburnum davidii</i>	✓		✓	✓	✓	✓	✓	✓
<i>Viburnum tinus</i>	✓		✓	✓	✓	✓	✓	✓
<i>Vinca major</i>		✓	✓	✓	✓	✓	✓	✓
<i>Vinca major 'Elegantissima'</i>		✓	✓	✓	✓	✓	✓	✓
<i>Vinca minor</i>		✓	✓	✓	✓	✓	✓	✓
<i>Vinca minor 'Alba'</i>		✓	✓	✓	✓	✓	✓	✓
<i>Vinca minor 'Atropurpurea'</i>		✓	✓	✓	✓	✓	✓	✓
<i>Vinca minor 'Bowles Variety'</i>		✓	✓	✓	✓	✓	✓	✓
<i>Vinca minor 'Gertrude Jekyll'</i>		✓	✓	✓	✓	✓	✓	✓
<i>Weigela flor. 'Folius Purpureis'</i>	✓	✓	✓	✓	✓	✓	✓	✓

PLANT POT SIZING GUIDE

Pot sizes are listed in litres capacity. They are usually black plastic, although an increasing number are being grown in taupe coloured pots to enable waste pots to be collected at the roadside.



Please note the above guide is for illustration purposes only and are not sized proportionally to one another.



We generally use our P9 pots to grow our stock on from, our most common P9 lines are Ilex aquifolium and some herb and herbaceous lines. Our P9 pots are generally square.



Our 2L pots are ideal for the production of amenity plants grown for one year, most commonly used for our 2L herbaceous and shrub lines, this size is great as the plants are small enough to establish but large enough to make an impact when first planted.



Slightly larger than a 2L, we generally use these for our garden centre plants and some amenity lines.



A 5L is ideal for the production of bigger shrubs with a larger root capacity, these can be seen across our nursery but generally found within our garden centre sales.



This is our most common pot for 'specimen plants' that have generally been grown for two years plus.



Used for specimen shrubs such as Rhododendrons and conifers and some small trees.

POT SIZES						
POT SIZE	POT DIAMETER		POT DIAMETER (BASE)		POT HEIGHT	
	cm	inches	cm	inches	cm	inches
9cm	9cm	3.5"	6cm	2.5"	8.5cm	3"
1 Litre	13cm	5"	10cm	4"	11cm	4"
2 Litre	17cm	6.5"	12cm	4.5"	13cm	5"
3 Litre	19cm	7.5"	13cm	5"	15cm	6"
4 Litre	20cm	8"	15.5cm	6"	16.5cm	6.5"
5 Litre	22.5cm	9"	16.5cm	6.5"	18cm	7"
7 Litre	25cm	10"	19cm	7.5"	20cm	8"
10 Litre	28cm	11"	24cm	9.5"	22.5cm	9"
15 Litre	33cm	13"	25.5cm	10"	30cm	12"
20 Litre	35.5cm	14"	27.5cm	11"	32.5cm	13"
25 Litre	38.5cm	15"	30cm	12"	35cm	14"
30 Litre	41cm	16"	33cm	13"	36cm	14"
40 Litre	50cm	20"	35.5cm	14"	45cm	18"

Please note: the pot sizes listed below may vary due to the different pot manufacturers we use.



TREES TOP 50

AN OVERVIEW OF OUR TOP 50 TREES

BETULA JACQUEMONTII

EVENTUAL HEIGHT: OVER 12 METRES

EVENTUAL SPREAD: 4-8 METRES

Is a very popular tree known for its stunning silvery white bark, formal upright shape, and dense crown with dark green leaves that contrast beautifully with the bright white bark in summer.

LIQUIDAMBAR STYRACIFLUA

EVENTUAL HEIGHT: OVER 12 METRES

EVENTUAL SPREAD: UP TO 8 METRES

Is a large slow growing deciduous tree known for its unrivaled autumn foliage which ranges from a fiery red, orange, yellow and purple colours that will last into December.

2



PRUNUS SERR. 'KANZAN'

EVENTUAL HEIGHT: 8-12 METRES

EVENTUAL SPREAD: UP TO 8 METRES

Is quite possibly the most well known Japanese cherry tree, best grown in full sun with a profuse display of double dark pink flowers that open among bronze green foliage come March and April.

3



MALUS 'JOHN DOWNIE'

EVENTUAL HEIGHT: 8-12 METRES

EVENTUAL SPREAD: 4-8 METRES

A small tree with dark green leaves and arching branches with white, pretty star-shaped flowers come spring. Best known for its oval fruit which are large, glossy, red and orange, and perfect for making preserves such as crab apple jelly.

4



SORBUS 'JOSEPH ROCK'

EVENTUAL HEIGHT: 8-12 METRES

EVENTUAL SPREAD: 4-8 METRES

A great upright tree with pinnate green foliage that turns a vibrant shade of red, orange, copper, purple and scarlet in autumn with amber yellow berries from late summer that provide treats for birds. Its small clusters of white flowers offer an early feast for bees and other insects in the spring.

5



TREES TOP 50

This alphabetical list of trees indicates their popularity, although one-off large orders might have a disproportionate effect on the range. For more information on a tree from this list, call us on 01423 330234.

PLANT SPECIES	MOIST	DRY	EXPOSED	SHELTERED	PART SHADE	SUN	ACID	ALKALINE
<i>Acer camp. 'Streetwise'</i>	✓	✓	✓	✓	✓	✓		✓
<i>Acer campestre</i>	✓	✓	✓	✓	✓	✓		✓
<i>Acer campestre 'Elsrijk'</i>	✓	✓	✓	✓	✓	✓		✓
<i>Acer plat. 'Crimson King'</i>	✓	✓		✓	✓	✓	✓	✓
<i>Acer plat. 'Emerald Queen'</i>	✓	✓		✓	✓	✓	✓	✓
<i>Acer platanoides</i>	✓	✓	✓	✓	✓	✓	✓	✓
<i>Acer pseudoplatanus</i>	✓	✓	✓	✓	✓	✓	✓	✓
<i>Acer rubrum</i>	✓	✓		✓	✓	✓	✓	✓
<i>Alnus cordata</i>	✓		✓	✓	✓	✓	✓	✓
<i>Alnus glutinosa</i>	✓		✓	✓	✓	✓	✓	✓
<i>Alnus incana</i>	✓		✓	✓	✓	✓	✓	✓
<i>Betula jacquemontii</i>	✓	✓	✓	✓	✓	✓	✓	✓
<i>Betula pendula</i>	✓	✓	✓	✓	✓	✓	✓	✓
<i>Betula pubescens</i>	✓	✓	✓	✓	✓	✓	✓	✓
<i>Carpinus betulus</i>	✓	✓	✓	✓	✓	✓	✓	✓
<i>Carpinus betulus 'Fastigiata'</i>	✓	✓	✓	✓	✓	✓	✓	✓
<i>Carpinus betulus 'Frans Fontaine'</i>	✓	✓	✓	✓	✓	✓	✓	✓
<i>Crataegus laev. 'Paul's Scarlet'</i>	✓	✓	✓	✓	✓	✓	✓	✓
<i>Fagus sylvatica</i>	✓		✓	✓	✓	✓		✓
<i>Liquidambar styraciflua</i>	✓	✓	✓	✓	✓	✓		✓
<i>Malus 'John Downie'</i>	✓	✓	✓	✓	✓	✓	✓	✓
<i>Malus 'Red Sentinel'</i>	✓	✓	✓	✓	✓	✓	✓	✓
<i>Malus sylvestris</i>	✓	✓	✓	✓	✓	✓	✓	✓
<i>Populus nigra</i>	✓		✓	✓		✓	✓	
<i>Populus tremula</i>	✓		✓	✓		✓	✓	
<i>Populus var. Nigra Italica</i>	✓		✓	✓		✓	✓	
<i>Prunus 'Amanogawa'</i>	✓	✓	✓	✓		✓	✓	✓
<i>Prunus avium</i>	✓	✓	✓	✓		✓	✓	✓
<i>Prunus avium 'Plena'</i>	✓	✓	✓	✓		✓	✓	✓
<i>Prunus padus</i>	✓	✓	✓	✓		✓	✓	✓
<i>Prunus sargentii</i>	✓	✓	✓	✓		✓	✓	✓
<i>Prunus serr. 'Kanzan'</i>	✓	✓	✓	✓		✓	✓	✓
<i>Pyrus calleryana 'Chanticleer'</i>	✓	✓	✓	✓		✓	✓	✓
<i>Quercus palustris</i>	✓	✓	✓	✓	✓	✓		✓

PLANT SPECIES	MOIST	DRY	EXPOSED	SHELTERED	PART SHADE	SUN	ACID	ALKALINE
<i>Quercus petraea</i>	✓	✓	✓	✓	✓	✓	✓	
<i>Quercus robur</i>	✓	✓	✓	✓	✓	✓	✓	✓
<i>Quercus robur 'Fastigiata'</i>	✓	✓	✓	✓	✓	✓	✓	✓
<i>Salix alba</i>	✓		✓	✓	✓	✓	✓	✓
<i>Sorbus aria 'Lutescens'</i>	✓	✓	✓	✓	✓	✓	✓	✓
<i>Sorbus auc. 'Asplenifolia'</i>	✓	✓	✓	✓	✓	✓	✓	
<i>Sorbus auc. 'Cardinal Royal'</i>	✓	✓	✓	✓	✓	✓	✓	
<i>Sorbus auc. 'Sheerwater Seedling'</i>	✓	✓	✓	✓	✓	✓	✓	
<i>Sorbus 'Joseph rock'</i>	✓	✓	✓	✓	✓	✓	✓	
<i>Sorbus vilmorinii</i>	✓	✓	✓	✓	✓	✓	✓	✓
<i>Sorbus aucuparia</i>	✓	✓	✓	✓	✓	✓	✓	
<i>Tilia cordata</i>	✓	✓	✓	✓	✓	✓	✓	✓
<i>Tilia cordata 'Greenspire'</i>	✓	✓	✓	✓	✓	✓	✓	✓
<i>Tilia platyphyllos</i>	✓	✓	✓	✓	✓	✓	✓	✓
<i>Tilia tomentosa 'brabant'</i>	✓	✓	✓	✓	✓	✓	✓	✓
<i>Tilia x europaea</i>	✓	✓	✓	✓	✓	✓	✓	✓

BARE ROOT AND ROOT BALL TREES AVAILABILITY

Our bare root and root balls are available from November – March when the trees are in a dormant state; this is the perfect time for planting.

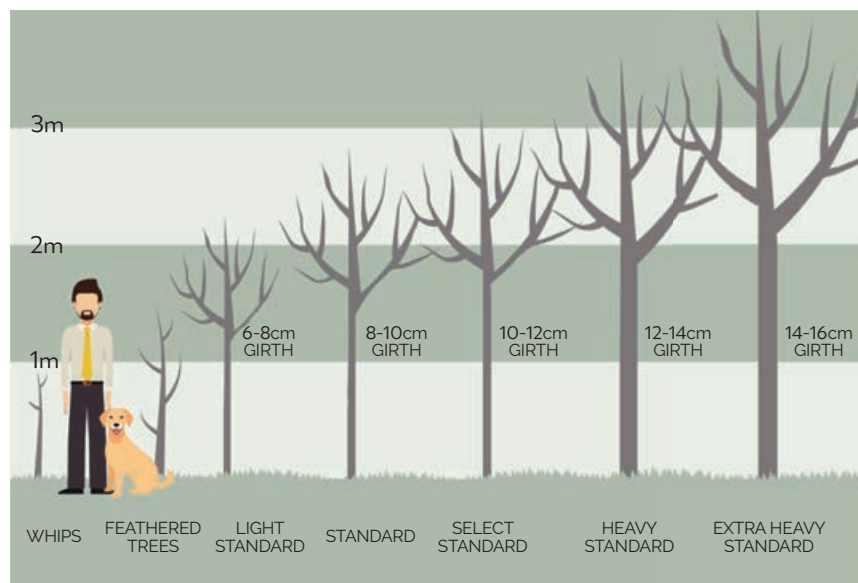


TREE SIZING GUIDE

We have many years of experience in the production and supply of trees ranging from transplants to extra heavy specimens.

With sales in excess of 60,000 trees annually across 2,500 variants, our customers have an opportunity to create an instant impact with well-established trees. As with all stock items tree selection is site specific and only the specifier can fully determine the suitability of product lines for each scheme. The bigger the plant, the more care required, particularly with evergreen trees.

For more information call us on 01423 330234.



Please note that the above image is for illustration purposes only and is not sized accurately.



WHAT IS A WHIP?

A whip is a transplant consisting of only a single slender stem, without significant side branching. The term usually refers to woody plants that are between two and four years old. The whip form reflects the natural characteristics of the mature tree. Whilst some species are well branched from a young age, others such as *Acer platanoides* and *Prunus avium* are more whip-like.



WHAT IS A FEATHERED TREE?

A feathered tree usually has an upright central leading shoot and a stem furnished with evenly spread and balanced lateral growths down to near ground level, according to species, the form reflects the natural characteristics of the tree.



WHAT IS A STANDARD TREE?

A standard tree has a substantial upright stem, clean of lateral growths, supporting a branched crown. The crown may have a central leader or branched head, and branching appropriate for species or cultivar, with no main branches crossing in the crown. Standard trees are available in several forms relating to their size: light, standard, select standard, heavy standard, extra heavy standard, advanced heavy standard - the bigger the tree, the more the landscape impact.

STANDARD TREE SIZES, HEIGHTS AND WEIGHTS							
	TREE GIRTH (cm)	TREE HEIGHT (cm)	CONTAINER SIZE (approx/L)	CONTAINER WEIGHT (approx/lb)	CONTAINER DIMENSIONS (approx/cm)	ROOTBALL SIZE (approx/cm)	ROOTBALL WEIGHT (approx/lb)
Light Standard (LS)	6-8	200-250	25+	25	40 x 35	30-40	30
Standard (S)	8-10	250-300	40+	40	40 x 35	40	50
Select Standard (SS)	10-12	300-350	45+	45	40 x 35	50	50
Heavy Standard (HS)	12-14	300-350	60+	60	50 x 40	60	60
Extra Heavy Standard (EHS)	14-16	350-400	80+	80	50 x 40	60	80
Advanced Heavy Standard (AHS)	16-18	400-450	80+	100	50 x 40	70	80
Semi-mature	18-20	450-500	80+	120	50 x 40	70-80	150
Semi-mature	20-25	450-550	200+	250+	80 x 50	80-90	225
Semi-mature	25-50	500-600	200+	300+	80 x 50	90-100	250-400

We regularly get asked how big a tree is to determine transportation and specific site requirements, we hope the above guide will help with this but please note that it is based on standard trees and not multistem or feathered trees, these guides can vary enormously between species but the stem is a much better indication of maturity than the height. We would recommend using lifting equipment for trees that have a girth above 12-14cm.

Please note stem circumference (girth) is measured 1m above ground level. This guide is only an approximate guide and may vary from tree, soil type and moisture levels within the pot or rootball and the growing environment.



HERBACEOUS TOP 100

AN OVERVIEW OF OUR TOP 100 HERBACEOUS LINES, STARTING WITH OUR TOP FIVE

ECHINACEA PURPUREA 'MAGNUS'

POSITION: FULL SUN

FLOWER PERIOD: JULY - SEPTEMBER

Provide daisy-like flowers from July through to September with dark prominent orange centres with deep pink petals. A great addition to a pollinator-friendly border.

GERANIUM 'JOHNSON'S BLUE'

POSITION: FULL SUN – PARTIAL SHADE

FLOWER PERIOD: MAY – SEPTEMBER

A low maintenance clump-forming perennial, with deep lobed leaves and long-stalked flowers, with rounded, dark-veined, lavender-blue petals.



CROCOSMIA 'LUCIFER'

POSITION: FULL SUN – PARTIAL SHADE

FLOWER PERIOD: AUGUST & SEPTEMBER

A clump forming perennial with narrow, erect, mid-green pleated leaves with vivid red flowers from August – September.



SALVIA 'CARADONNA'

POSITION: FULL SUN – PARTIAL SHADE

FLOWER PERIOD: JUNE – OCTOBER

A long flowering perennial with violet- purple flowers above grey-green leaves that flower from June through to October.



CAREX 'EVERGOLD'

POSITION: FULL SUN – PARTIAL SHADE

FLOWER PERIOD: JUNE – OCTOBER

'Evergold' is a small evergreen ornamental grass that forms low mounds of striking dark green leaves with a central strip of creamy yellow. Perfect with perennials or other planted ornamental grasses.



HERBACEOUS TOP 100

This alphabetical list of herbaceous plants provides an indication of our most purchased herbaceous lines. Although the purchase of some plants in large quantities may affect their general popularity position. **For more information on a herbaceous plant from this list, call us on 01423 330234.**

PLANT SPECIES	MOIST	DRY	EXPOSED	SHELTERED	PART SHADE	SUN	ACID	ALKALINE
<i>Achillea filipen.</i> 'Cloth of Gold' 2L		✓	✓			✓	✓	✓
<i>Agapanthus africanus</i> 2L		✓		✓		✓	✓	✓
<i>Ajuga reptans</i> 'Cattlin's Giant' 2L	✓	✓		✓	✓		✓	✓
<i>Ajuga reptans</i> 'Atropurpurea' 2L	✓	✓		✓	✓		✓	✓
<i>Alchemilla mollis</i> 2L	✓		✓	✓	✓	✓	✓	✓
<i>Allium hollandicum</i> 'Purple Sensation' 2L		✓		✓		✓	✓	✓
<i>Anemone hupeh.</i> 'September Charm' 2L	✓	✓	✓	✓	✓	✓	✓	✓
<i>Anemone</i> hybr. 'Honore Jobert' 2L	✓	✓	✓	✓	✓	✓	✓	✓
<i>Artemisia</i> 'Powis Castle' 2L		✓	✓	✓		✓	✓	✓
<i>Asplenium scolopendrium</i> 2L	✓	✓	✓	✓	✓	✓		✓
<i>Aster x frik.</i> 'Monch' 2L	✓		✓	✓		✓	✓	✓
<i>Astilbe</i> 'Fanal' 2L	✓	✓	✓	✓	✓	✓	✓	✓
<i>Astrantia major</i> 2L	✓		✓	✓	✓	✓	✓	✓
<i>Bergenia cordifolia</i> 2L	✓		✓	✓	✓	✓	✓	✓
<i>Bergenia cordifolia</i> 'Purpurea' 2L	✓		✓	✓	✓	✓	✓	✓
<i>Bergenia</i> 'Silberlicht' 2L	✓		✓	✓	✓	✓	✓	✓
<i>Bergenia</i> 'Bressingham White' 2L	✓		✓	✓	✓	✓	✓	✓
<i>Brunnera</i> macr. 'Jack Frost' 2L	✓	✓		✓	✓	✓	✓	✓
<i>Briza media</i> 2L			✓	✓		✓	✓	✓
<i>Calamagrostis acut.</i> 'Karl Foerster' 2L			✓	✓	✓	✓	✓	✓
<i>Carex buchananii</i> 2L	✓			✓	✓	✓	✓	✓
<i>Carex comans</i> 'Bronze Form' 2L	✓		✓	✓	✓	✓	✓	✓
<i>Carex comans</i> 'Frosted Curly' 2L	✓		✓	✓	✓	✓	✓	✓
<i>Carex</i> 'Ice Dance' 2L	✓		✓	✓	✓	✓	✓	✓
<i>Carex elata</i> 'Aurea' 2L	✓	✓	✓	✓	✓	✓	✓	✓
<i>Carex oshimensis</i> 'Evergold' 2L	✓		✓	✓	✓	✓	✓	✓
<i>Carex pendula</i> 2L	✓		✓	✓	✓	✓	✓	✓
<i>Carex testacea</i> 2L	✓	✓		✓	✓	✓	✓	✓
<i>Crococsmia</i> 'George Davidson' 2L	✓	✓	✓	✓	✓		✓	✓
<i>Crococsmia</i> 'Lucifer' 2L	✓	✓	✓	✓	✓	✓	✓	✓
<i>Deschampsia cesp.</i> 'Goldtau' 2L		✓	✓	✓	✓	✓	✓	
<i>Deschampsia cespitosa</i> 2L		✓	✓	✓	✓	✓	✓	
<i>Dryopteris affinis</i> 2L		✓	✓	✓	✓	✓	✓	✓
<i>Dryopteris filix-mas</i> 2L		✓	✓	✓	✓	✓	✓	✓

PLANT SPECIES	MOIST	DRY	EXPOSED	SHELTERED	PART SHADE	SUN	ACID	ALKALINE
<i>Echinacea</i> purp. 'Magnus' 2L		✓	✓	✓		✓	✓	✓
<i>Echinacea purpurea</i> 2L		✓	✓	✓		✓	✓	✓
<i>Epimedium rubrum</i> 2L	✓			✓	✓		✓	
<i>Erysimum</i> 'Bowles' Mauve' 2L	✓	✓	✓	✓		✓		✓
<i>Euphorbia amygd.</i> 'Purpurea' 2L	✓	✓	✓	✓	✓	✓	✓	✓
<i>Euphorbia amygd.</i> 'Robbiae' 2L	✓	✓	✓	✓	✓	✓	✓	✓
<i>Euphorbia griffithii</i> 'Fireglow' 2L	✓		✓	✓	✓		✓	✓
<i>Festuca</i> 'Elijah Blue' 2L	✓	✓	✓	✓		✓	✓	✓
<i>Galium odoratum</i> 2L		✓		✓	✓		✓	✓
<i>Geranium</i> endr. 'Wargrave Pink' 2L		✓	✓	✓	✓	✓	✓	✓
<i>Geranium</i> 'Johnson's Blue' 2L		✓	✓	✓	✓	✓	✓	✓
<i>Geranium</i> macr. 'Album' 2L (White)		✓	✓	✓	✓	✓	✓	✓
<i>Geranium</i> macr. 'Ingwersen's Var.' 2L (pink)		✓	✓	✓	✓	✓	✓	✓
<i>Geranium</i> macr. 'Spessart' 2L (White)		✓	✓	✓	✓	✓	✓	✓
<i>Geranium macrorrhizum</i> 2L (Pink)		✓	✓	✓	✓	✓	✓	✓
<i>Geranium</i> 'Rozanne' 2L (Blue)		✓	✓	✓	✓	✓	✓	✓
<i>Hakonechloa macra</i> 2L	✓	✓	✓	✓	✓	✓	✓	✓
<i>Hakonechloa macra</i> 'Aureola' 2L	✓	✓	✓	✓	✓	✓	✓	✓
<i>Helleborus niger</i> 2L	✓				✓			✓
<i>Helleborus orientalis</i> 2L	✓				✓			✓
<i>Helenium</i> 'Moerheim Beauty'	✓	✓	✓	✓		✓	✓	✓
<i>Heuchera</i> 'Obsidian' 2L	✓	✓	✓	✓	✓	✓	✓	✓
<i>Heuchera</i> 'Palace Purple' 2L	✓	✓	✓	✓	✓	✓	✓	✓
<i>Hemerocallis</i> 'Stella de Oro' 2L	✓		✓	✓		✓	✓	✓
<i>Heuchera</i> cyl. 'Greenfinch' 2L	✓	✓	✓	✓	✓	✓	✓	✓
<i>Hosta</i> fort. 'Aureomarginata' 2L	✓			✓	✓		✓	
<i>Hosta</i> 'Francee' 2L	✓			✓	✓		✓	
<i>Hosta</i> 'Minuteman' 2L	✓			✓	✓		✓	
<i>Imperata</i> cyl. 'Red Baron' 2L		✓	✓	✓	✓	✓	✓	✓
<i>Iris foetidissima</i> 2L	✓	✓	✓	✓	✓	✓	✓	✓
<i>Iris pseudacorus</i> 2L	✓	✓	✓	✓	✓	✓	✓	
<i>Iris</i> sib. 'Perry's Blue' 2L	✓	✓	✓	✓	✓	✓	✓	
<i>Kniphofia</i> 'Royal Castle' 2L		✓		✓	✓	✓	✓	✓

PLANT SPECIES	MOIST	DRY	EXPOSED	SHELTERED	PART SHADE	SUN	ACID	ALKALINE
<i>Lamium</i> mac. 'Beacon Silver' 2L		✓		✓	✓	✓	✓	✓
<i>Liriope muscari</i> 2L	✓	✓		✓	✓		✓	
<i>Liriope muscari</i> 'Big Blue' 2L	✓	✓	✓	✓	✓		✓	
<i>Luzula nivea</i> 2L	✓		✓	✓	✓	✓	✓	✓
<i>Luzula sylvatica</i> 2L	✓		✓	✓	✓	✓	✓	✓
<i>Matteuccia struthiopteris</i> 2L	✓			✓	✓		✓	
<i>Miscanthus</i> sin. 'Gracillimus' 2L	✓		✓	✓		✓	✓	✓
<i>Miscanthus</i> sin. 'Morning Light' 2L	✓		✓	✓		✓	✓	✓
<i>Miscanthus sinensis</i> 2L	✓		✓	✓		✓	✓	✓
<i>Miscanthus</i> sin. 'Zebrinus' 2L	✓		✓	✓		✓	✓	✓
<i>Molinia caerulea</i> 2L	✓		✓	✓	✓	✓	✓	
<i>Nepeta</i> 'Six Hills Giant' 2L	✓		✓	✓	✓	✓	✓	✓
<i>Ophiopogon</i> plan. 'Nigrescens' 2L		✓	✓	✓	✓	✓	✓	
<i>Pennisetum alopec.</i> 'Hameln' 2L		✓		✓		✓	✓	✓
<i>Penstemon</i> 'Garnet' 2L		✓	✓	✓	✓	✓	✓	✓
<i>Persicaria affinis</i> 'Superba' 2L		✓	✓	✓	✓	✓	✓	✓
<i>Persicaria</i> 'Darjeeling Red' 2L		✓	✓	✓	✓	✓	✓	✓
<i>Polypodium vulgare</i> 2L	✓			✓	✓	✓		✓
<i>Polystichum setiferum</i> 2L	✓		✓	✓	✓	✓	✓	✓
<i>Rudbeckia</i> fulg. 'Goldsturm' 2L	✓		✓	✓	✓	✓	✓	✓
<i>Salvia</i> 'East Friesland' 2L		✓	✓	✓	✓	✓	✓	✓
<i>Salvia</i> nem. 'Caradonna' 2L		✓	✓	✓	✓	✓	✓	✓
<i>Sedum</i> spec. 'Autumn Joy' 2L	✓	✓	✓			✓		✓
<i>Sesleria autumnalis</i> 2L	✓		✓	✓	✓	✓		✓
<i>Stachys</i> byz. 'Silver Carpet' 2L		✓	✓	✓		✓	✓	✓
<i>Stachys byzantina</i> 2L		✓	✓	✓		✓	✓	✓
<i>Stipa arundinacea</i> 2L	✓	✓	✓	✓	✓	✓	✓	✓
<i>Stipa gigantea</i> 2L	✓	✓		✓		✓	✓	✓
<i>Stipa</i> 'Pony Tails' 2L	✓	✓	✓	✓		✓	✓	✓
<i>Stipa tenuissima</i> 2L	✓	✓	✓	✓		✓	✓	✓
<i>Tiarella cordifolia</i> 2L				✓	✓	✓	✓	✓
<i>Verbena bonariensis</i> 2L		✓	✓	✓		✓	✓	✓
<i>Walsteinia temata</i> 2L	✓	✓		✓	✓	✓	✓	✓

OUR GARDENING REMINDERS...



JANUARY

Clean rainwater gutters from all buildings to prevent spring overflows.

...

In freezing conditions ensure the ice on the pond is broken to allow the escape of toxic gases and oxygen exchange. Do not hammer the ice as it may stun the fish.

...

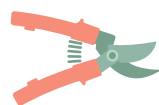
Service the lawnmower, the grass will be growing again very soon!

...

If there is heavy snowfall, brush snow off conifers and heathers to prevent damage.

...

Turn compost heaps top to bottom and sides to the middle for even degrading.



FEBRUARY

Repair broken spouts, fences, trellises, steps, and walls. Clean out and sterilise bird boxes.

...

Divide and replant snowdrops as the flowers go over.

...

Prune climbing roses, keep 5-7 strong shoots and cut others back to within 3 buds of the base.

...

Prune shrub roses late Feb. to encourage growth from the base. Remove some old shoots.

...

Complete formative pruning of trees and shrubs, remove leader if a bush form is required.



MARCH

Dig potato trenches incorporating well-rotted manure into the trench base.

...

Prune decorative Cornus and Salix to within 5cm of old shoots. Prune 'Midwinter Fire' lightly.

...

Finish pruning soft fruit bushes by mid-March and give a high nitrogen feed.

...

New shrubs and herbaceous plants can be planted when the conditions are good.

...

Feed roses with a general fertiliser and do it again in the summer.



APRIL

Prune early flowering shrubs such as Forsythia and Hamamelis as soon as flowering is over.

...

Continue to divide herbaceous plants if necessary.

...

Rake lawns to remove worm casts, twigs and old grass.

...

Trim lavenders to shape, but don't cut into the previous seasons wood.

...

Be sure to ventilate greenhouses and cold frames on warmer days.



MAY

Water any newly planted trees & shrubs and give a general feed and a mulch to preserve water.

...

Clip established privet, ivy, Lonicera varieties etc. also clip topiary to maintain a tidy appearance.

...

Keep weeds down by frequent hoeing, a 10cm mulch, or chemical sprays against perennial weeds.

...

Watch out for the vivid red lily beetles from mid-May onwards, catch them and squash them!

...

Set lawn mower blades to their final height for summer. Apply a high nitrogen fertiliser to the lawn.



JUNE

Continue to stake and tie those tall plants which are still growing.

...

Deadhead roses after they have gone over, cut back to a leaf axil to promote new flower growth.

...

Keep cutting sweet peas to ensure repeat flowering. Kill greenfly as you do it!

...

Water containers whenever compost feels dry, add a liquid feed if no long release feed was added.

...

Trim back the growth of Erica carnea varieties and top-dress with peat.



JULY

When weather is very dry, give newly planted trees a good soaking, better than little & often.

...

Clip large-leaved evergreen hedges this month using secateurs. Ensure there are no nesting birds.

...

Check the moisture level of hanging baskets every morning. Water thoroughly if dry & feed weekly.

...

Keep hydrangeas well-watered, they are quick to show the wilting signs of water shortage.

...

Prune pyracanthas by cutting side-shoots to 2-3 leaves from their base for a good show of berries.



AUGUST

Complete lifting of last season's bulbs and dry them off in woven sacks for maximum ventilation.

...

Clean up and dispose of early fallen fruit such as apples, to prevent disease spread.

...

Cut back long whippy growths of Wisteria to within three buds of the old wood for maximum flowers.

...

Towards the end of the month cut back fruited canes of Raspberries etc. and tie in young shoots.

...

Keep hardy & half hardy annuals well-watered and weed-free. Try not to walk on the growing beds.



SEPTEMBER

Dig over the borders as bedding plants are removed later this month if you have heavy soil.

...

On a beautiful evening walk around the garden and make notes of all the things to improve for next year.

...

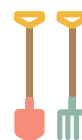
As lawn mowing diminishes, remove the old 'thatch' with a spring tine rake. Aerate with the prongs of a garden fork or hire a suitable machine.

...

A good time to sort out and place your order for bulbs, plant tulip in November to reduce disease.

...

Crocus form large mounds of corms, divide them with two forks or a hosepipe, clean and replant.



OCTOBER

Lift Dahlias and other tender perennials when temperatures fall sharply. Store in a frost-free place.

...

Collect seed of plants you wish to increase. Store dry seed in paper envelopes in the fridge bottom.

...

Collect leaves as they fall around the garden and store in a wire mesh bin for next years' compost.

...

Lift, divide, and replant rhubarb crowns which have been in the ground for at least five years.

...

An excellent month to lay turf on prepared, firm, weed-free and raked ground.



NOVEMBER

Be sure to check for hibernating animals (particularly hedgehogs) before lighting the bonfire.

...

Collect all stakes used for support around the garden, clean off, and store indoors over winter.

...

Plant winter bedding such as wallflowers, pansies, primroses etc. when conditions are good.

...

Start Amaryllis (Hippeastrum) bulbs urgently if required to flower by Christmas.

...

Place grease-bands on the trunks of fruit trees to catch female winter moths as they climb the tree.



DECEMBER

To prevent flooding, ensure that rainwater drains on the property are not choked with leaves.

...

Make sure that all outside water taps and pipes are turned off and lagged against winter cold spells.

...

Prune Acers and Betula sp. before mid-December to prevent wounds from bleeding.

...

Do not prune Hamamelis, Chimonanthus and Forsythia until after flowering.

...

Thoroughly clean and oil all garden tools, mowers, hedge trimmers, etc., and sharpen all cutting blades.



HEDGING TOP 30

AN OVERVIEW OF OUR HEDGING TOP 30

1 CRATAEGUS MONOGYNA

POSITION: FULL SUN OR PARTIAL SHADE

FLOWERING PERIOD: MAY

Commonly known as hawthorn, they make a great stock-proof attractive hedge with clumps of white scented flowers come May, followed by dark red berries that native birds enjoy. Its spiny thorns also act as a deterrent against intruders.

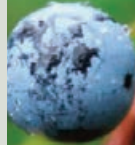


PRUNUS SPINOSA

POSITION: FULL SUN OR PARTIAL SHADE

FLOWERING PERIOD: MAY

Also known by the common names of Blackthorn or Sloe, produce attractive white flowers in early spring followed by green foliage and sloe berries during the autumn. It will grow well in most soil types and makes a fantastic barrier.



TAXUS BACCATA

POSITION: FULL SUN OR PARTIAL SHADE

A quintessential English hedge, commonly known as English Yew. A great dense evergreen hedge with dark green foliage that looks great in a formal garden or park. Although poisonous to animals, its red autumnal berries provide a feast for birds.



PRUNUS ROTUNDIFOLIA

POSITION: FULL SUN, PARTIAL SHADE OR SHADE

FLOWERING PERIOD: APRIL

Also known as laurel, this dense, bushy, evergreen shrub has large glossy, dark green leaves and makes a fantastic hedging plant for all positions including full sun, partial shade and shade.



ACER CAMPESTRE

POSITION: FULL SUN OR PARTIAL SHADE

Commonly known as 'Field Maple', a native hedging variety with 5 lobed leaves that are a green/red in spring and summer followed by shades of yellow come autumn. Helicopter like seeds can be seen in autumn and small yellow/green flowers can be seen in spring.

HEDGING TOP 30

This alphabetical list of hedging plants provides an indication of their popularity, although the purchase of some hedging plants in large quantities may affect their general position. For more information on a hedging plant from this list, call us on 01423 330234.

PLANT SPECIES	MOIST	DRY	EXPOSED	SHELTERED	PART SHADE	SUN	SLIGHTLY ACID	SLIGHTLY ALKALINE
<i>Acer campestre</i>	✓		✓	✓	✓	✓	✓	✓
<i>Buxus sempervirens</i>	✓	✓	✓	✓	✓	✓	✓	✓
<i>Carpinus betulus</i>	✓	✓	✓	✓	✓	✓	✓	✓
<i>Comus alba</i>	✓		✓	✓	✓	✓	✓	✓
<i>Comus alba</i> 'Elegantissima'	✓		✓	✓	✓	✓	✓	✓
<i>Comus sanguinea</i>	✓		✓	✓	✓	✓	✓	✓
<i>Comus stolonifera</i> 'Flaviramea'	✓		✓	✓	✓	✓	✓	✓
<i>Corylus avellana</i>	✓		✓	✓	✓	✓		✓
<i>Crataegus monogyna</i>	✓	✓	✓	✓	✓	✓	✓	✓
<i>Euonymus europaeus</i>	✓		✓	✓	✓	✓	✓	✓
<i>Fagus sylv.</i> 'Purpurea'	✓		✓	✓	✓	✓	✓	✓
<i>Fagus sylvatica</i>	✓		✓	✓	✓	✓	✓	✓
<i>Ligustrum oval.</i> 'Aureum'	✓		✓	✓	✓	✓	✓	✓
<i>Ligustrum ovalifolium</i>	✓		✓	✓	✓	✓	✓	✓
<i>Ligustrum vulgare</i>	✓		✓	✓	✓	✓	✓	✓

PLANT SPECIES	MOIST	DRY	EXPOSED	SHELTERED	PART SHADE	SUN	SLIGHTLY ACID	SLIGHTLY ALKALINE
<i>Malus sylvestris</i>	✓	✓	✓	✓	✓	✓	✓	✓
<i>Prunus laur.</i> 'Rotundifolia'	✓		✓	✓	✓	✓	✓	✓
<i>Prunus padus</i>	✓		✓	✓		✓	✓	✓
<i>Prunus spinosa</i>	✓		✓	✓		✓	✓	✓
<i>Pyrus communis</i>	✓			✓		✓	✓	✓
<i>Rhamnus cathartica</i>	✓		✓	✓	✓	✓	✓	✓
<i>Rhamnus frangula</i>	✓		✓	✓	✓	✓	✓	✓
<i>Rosa</i> 'Canina'	✓		✓	✓	✓	✓	✓	✓
<i>Rosa rubiginosa</i>	✓		✓	✓		✓	✓	✓
<i>Rosa rugosa</i>	✓	✓	✓	✓		✓	✓	✓
<i>Sambucus nigra</i>	✓		✓	✓	✓	✓	✓	✓
<i>Symphoricarpos albus</i>	✓		✓	✓	✓	✓	✓	✓
<i>Taxus baccata</i>	✓	✓	✓	✓	✓	✓	✓	✓
<i>Viburnum lantana</i>	✓		✓	✓	✓	✓	✓	✓
<i>Viburnum opulus</i>	✓		✓	✓	✓	✓	✓	✓

A GUIDE TO BARE ROOT & ROOT BALL HEDGING

WHAT IS DECIDUOUS HEDGING?

A deciduous hedge is a natural way to define a boundary with a natural looking effect. They provide screening and give wildlife a home and provide great autumn colours before dropping their leaves. Deciduous hedging varieties are available throughout the year in containers or as bare root come November.

Popular deciduous hedging varieties we supply include:

- Acer campestre
- Carpinus betulus
- Crataegus monogyna
- Fagus sylvatica
- Fagus sylvatica 'Purpurea'
- Prunus spinosa

WHAT IS EVERGREEN HEDGING?

Evergreen hedging retains its leaves throughout the winter months making it ideal for privacy screening, it also acts as a valuable sound barrier. Evergreen hedging is available all year in pots and between November and March as rootballs.

Popular evergreen varieties we supply include:

- Prunus rotundifolia
- Taxus baccata
- Ilex aquifolium
- Buxus sempervirens
- Photinia red robin
- Prunus lusitanica

SPECIFICATION KEY

SEE	Seedling	WRB	Wired Root Ball
TRA	Transplant	1 + 0	One year seedling
TRF	Feathered Transplant	1 + 0	One year hardwood cutting
BR	Bare Root	1 + 1	One year seedling transplanted for one year
RB	Root Ball	1 + 2	One year seedling transplanted for two years



BARE ROOT

The cheapest and often the most cost-effective way of planting hedging or young forestry plants, bare root hedging is available from November – March. Typically, available from 40-60cm up to 200-250cm tall in deciduous plants and up to 100cm in evergreen plants.



ROOT BALLS

Typically, larger and more expensive than bare root plants, rootball hedging is lifted with much of the soil surrounding its roots still intact to reduce root disruption and reduce the risk of failure. More commonly mature deciduous or evergreen hedging has a greater branching structure or multiple stems.



POT GROWN

Available in a large range of sizes, pot grown hedging can be planted all year round. As the roots of pot grown hedging are self-contained the risk of failure tends to be lower, particularly in large evergreens.



INSTANT HEDGING

Available as pot or field grown products, often the most expensive hedging option, instant hedging provides a dense screen or barrier and gives the impression of an established hedge. Specified by height, width and depth it is often supplied in 1m lengths.



CLIPPED HEDGING UNITS

Rootball or pot grown clipped hedging can be used to create an instant or near instant screen. Clipped or trimmed over time to create a denser product, clipped hedging should be specified three dimensionally rather than just by height.

HEDGE PLANTING GUIDE

HEIGHTS	ROOT	PLANTS PER METRE	HEIGHTS	ROOT	PLANTS PER METRE
20-30cm	BR/P9	approx 5-7	125-150cm	BR	approx 3-5
40-60cm	BR	approx 5-7	125-150cm	RB	approx 2
60-80cm	BR	approx 5-7	150-175cm	BR	approx 3
80-100cm	BR	approx 5-7	150-175cm	RB	approx 1-2
80-100cm	RB	approx 2-3	175-200cm	BR	approx 3
100-125cm	BR	approx 3-5	175-200cm	RB	approx 1-2
100-125cm	RB	approx 2-3	200-250cm	BR	approx 3
			200-250cm	RB	approx 1

CONTACT US



WHOLESALE COMMERCIAL

TEL: 01423 330234

EMAIL: info@nurserymen.co.uk

WEB: www.nurserymen.co.uk/wholesale-commercial/



GARDEN CENTRE SALES

TEL: 01423 332309

EMAIL: paul@nurserymen.co.uk

WEB: www.nurserymen.co.uk/garden-centre-sales/



WHOLESALE XPRESS (CASH & CARRY)

TEL: 01423 332324

EMAIL: wpc@nurserymen.co.uk

WEB: www.nurserymen.co.uk/wholesale-xpress/



CONNECT WITH US



www.facebook.com/JohnsonsWhixley/



twitter.com/JohnsonsWhixley



www.instagram.com/johnsonswixley/



www.linkedin.com/company/johnsons-of-whixley-ltd



www.youtube.com/channel/UCQlqYXJQ8wWseqK6S13dF1g

TERMS AND CONDITIONS

Visit - www.nurserymen.co.uk/downloads





TAKING A GROWING LEAD

JOHNSONS OF WHIXLEY, GILSTHWAITE LANE, WHIXLEY, YORK YO26 8AQ
T. 01423 330234 E. info@nurserymen.co.uk W. www.nurserymen.co.uk

